

2003 JAY FLIGHT™ TRAVEL TRAILERS & FIFTH WHEELS BY JAYCO



31 BHS interior

Look inside, and
you'll wonder

how
you can get
so
much

for
so little.



You want to travel in comfort and style. But you also want to have enough money to take a tour, rent a kayak, go horseback riding and buy some souvenirs. With over 35 years experience of building family fun, Jayco created a recreational vehicle that makes travel easy and delivers the best value for your hard-earned money. The kind of value you'll find in Jay Flight™ travel trailers and fifth wheels.

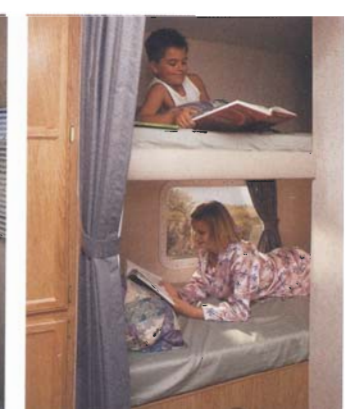
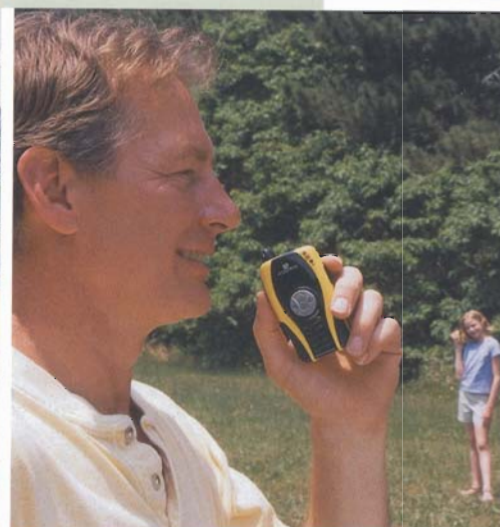
Jayco® was proud to participate in and serve as the official recreational vehicle of The Park Programs/Summer-Fun Sweepstakes in 2002, involving our nation's National Parks.

The kitchen is loaded with features to make home seem closer such as a flush-mounted double-door refrigerator, 3-burner range top with 9,000-BTU SuperBurner™, piezo igniter and 17" oven and microwave with turntable. Dinette slideouts (some models) give you more room to enjoy your meals.

Our optional portable gas barbecue grill lets you get that great grilled flavor. And it comes with a handy carrying case.

Keep tabs on your kids or other family members with the optional Audiovox® family two-way radio system, including four hand-held radios and holder/charger.

Freshen up in the bathroom, loaded with features such as ABS shower/tub, medicine cabinet with mirror, optional power roof vent and even an optional skylight.



The tough aluminum exterior will keep looking great through years of travel. The front window (travel trailers) features a stone guard to protect it from road debris during your travels.

No need to leave your favorite clothes behind. The bedroom gives you ample storage in the optional shirt/wardrobe closet and under the bed that lifts easily on struts.

Give your kids their own space without sacrificing interior room with optional double (31 BHS and 27 BH) or triple (29 BH) bunk beds.

Find comfort in the value of Jay Flight™ fifth wheel.

The living room gives you more elegance than you'd expect for the price, with an accent mirror, full-length lambrequin window treatments with blinds, carpeting with thick pad and our beautiful Fairfield Oak flat-panel doors and drawers.

Standard Jake Plate™ adjustable axle hanger plates allow you to adjust the axle height to accommodate tow vehicles of different heights. Take a walk around and you'll find other useful features, such as optional rear stabilizer jacks that keep you steady, large lockable radius storage compartments with grab handles that give you plenty of space and even an optional patio awning that keeps you cool.



E-Z Lube® axles with removable caps make maintenance simple.



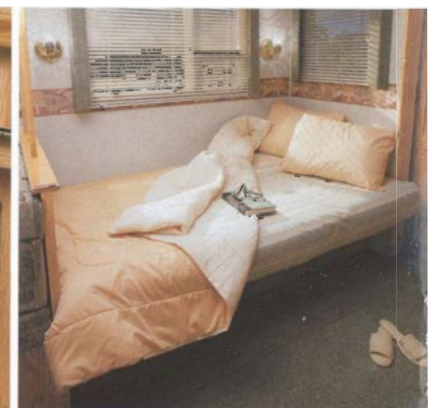
Front landing gear, moved to the outer corners, provide a stable base. Jay Flight™ offers both optional electric and snap jacks.



Get crystal clear drinking water with the optional water filtration system, which is built-in so you won't have to mount one outside.



The oak entertainment center gives you space for a TV, VCR and the optional automotive-style AM/FM stereo with CD player and CD storage. Or, place your TV in the optional overhead TV cabinet.



Our plush, residential-style J-Steel™ convertible sofa easily folds down into a flat, comfy bed so you can get a good night's rest. The bed fits flush with the wall to give you added floor space.

2003 Jay Flight™ Travel Trailer and Fifth Wheel Standards and Options

STANDARD EXTERIOR AND CONSTRUCTION FEATURES

- 15" radial tires
- Large lockable radius storage compartment with grab handles
- PolyFlex™ underbelly covering
- Retractable double entrance step (triple step on slideout models)
- Front window with stone guard (travel trailers)
- Patio light with inside switch
- Radius fiberglass entrance door
- White radius-cornered windows
- Hitch safety chains (travel trailers)
- Bumper with drain hose carrier
- Rubber roof with 12-year warranty
- R-7 sidewall, roof and floor insulation
- 5/8" tongue & groove plywood flooring
- Painted bottom radius skirting
- Stabilizer jacks - rear (slideout models)

STANDARD HEAT, POWER AND WATER FEATURES

- Twin 20-lb. gas bottles with regulator
- City water hookup
- Systems monitor panel
- Demand water pump
- 12V electrical system
- Deluxe 45-amp. 110V power converter
- 6-gal. gas water heater
- 30-amp. power cord
- 110V exterior receptacle
- Auto-ignition furnace with thermostat
- In-floor ducted heating
- LP leak detector
- Fire extinguisher
- 13,500-BTU central air conditioning
- ABS holding tanks
- 10-year leak-free Plumb-Pex® water system
- * E-Z Lube® axles
- * Jake Plate™ (fifth wheels)

* New for 2003!

STANDARD BATHROOM FEATURES

- ABS tub/shower
- Shower curtain
- Towel holder
- Marine toilet
- Large bath sink
- Medicine cabinet with mirror
- Vinyl floor

STANDARD KITCHEN FEATURES

- Residential-style mixing faucet
- Residential-style stainless steel sink
- Color-coordinated counter tops
- Extra-deep kitchen drawers
- Flush-mount double door refrigerator
- Deep, lipped overhead cabinets
- 3-burner range with 9,000-BTU SuperBurner™ and piezo igniter
- Microwave with turntable
- Wallpaper border
- Spice rack in kitchen base cabinet
- * Range/oven

STANDARD LIVING ROOM FEATURES

- Fairfield Oak flat-panel doors and drawers
- J-Steel™ convertible sofa (some models)
- Manually-operated slide room system (some models)
- Coordinated decorator fabrics throughout
- Mini blinds
- * Valances w/lambrequins
- TV antenna with signal booster
- Cable TV hookup
- Brass lighting in living area
- Carpet w/pad in living room
- * Accent wall mirror

STANDARD BEDROOM FEATURES

- Innerspring foam mattress
- Privacy curtain closure
- Bed support strut
- Carpet w/pad in bedroom
- Brass accent lighting

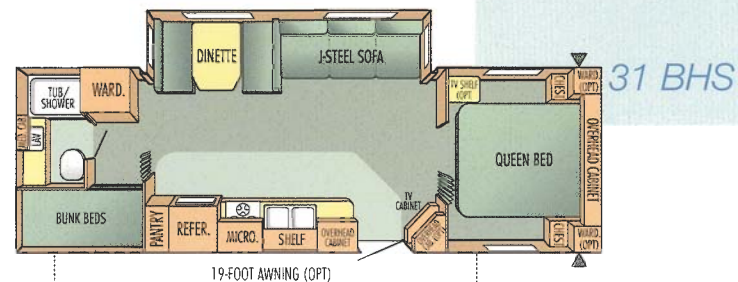
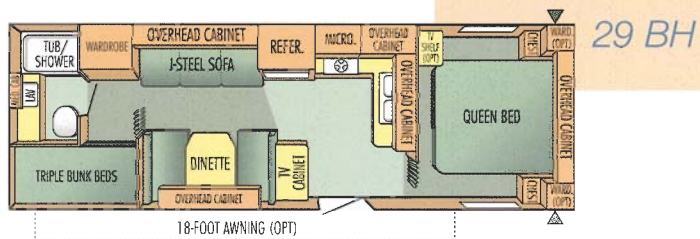
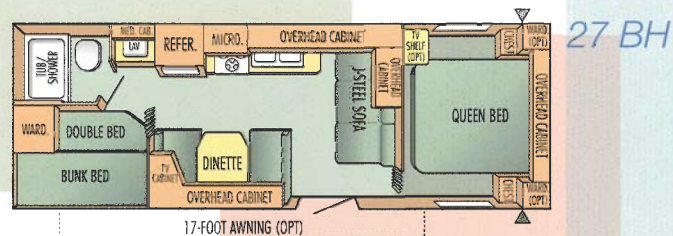
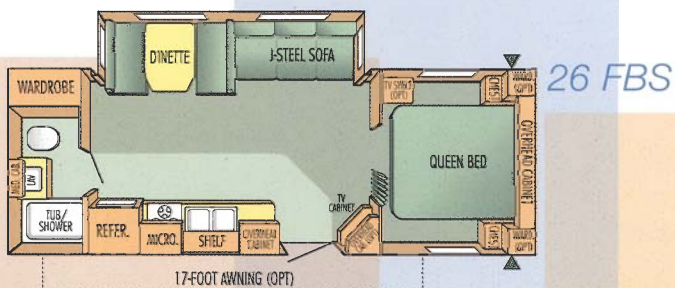
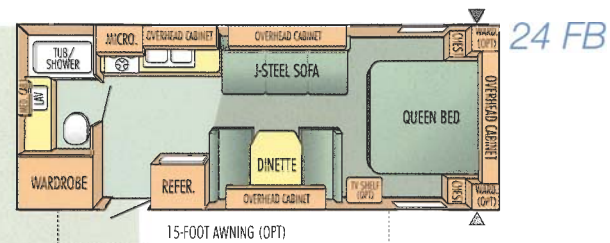
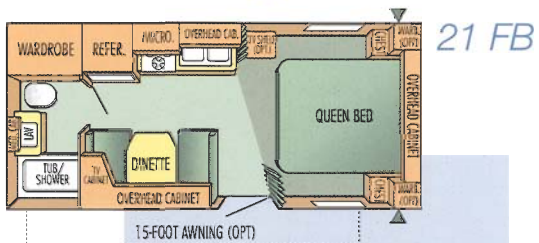
OPTIONAL FEATURES

- Overhead TV cabinets
- Bedroom TV shelf
- Shirt wardrobes in bedroom
- Bi-fold privacy door
- Oak value package
- Kitchen sink cover
- Quilted bedspread
- Linoleum (LO) carpet (some models)
- Tinted safety glass
- Bath skylight
- Stabilizer jacks
- Deal 30-lb. LP gas bottles with regulator
- ABS gas bottle cover for 30-lb. bottles
- 15,000-BTU central air conditioning
- Power roof vent in bath
- 6-gal. gas/electric auto-ignition water heater
- * Water purifier
- * Audiovox family 2-way radio system
- * Outside portable gas barbeque grill w/carrying case
- Range cover
- Patio awning
- Outside shower
- Stereo AM/FM with CD player
- Spare tire with carrier
- Vinyl tire cover
- Electric slideout room system (some models)
- Electric jacks (fifth wheels)
- Snap jacks (fifth wheels)

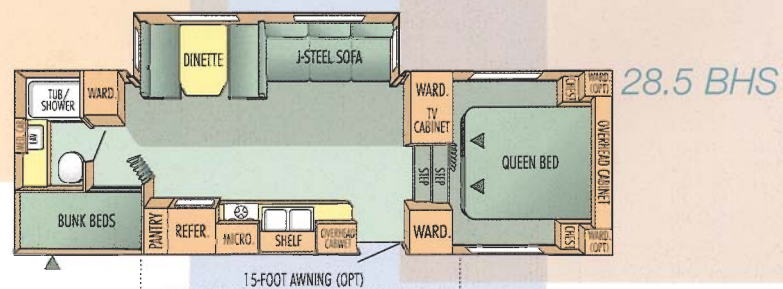
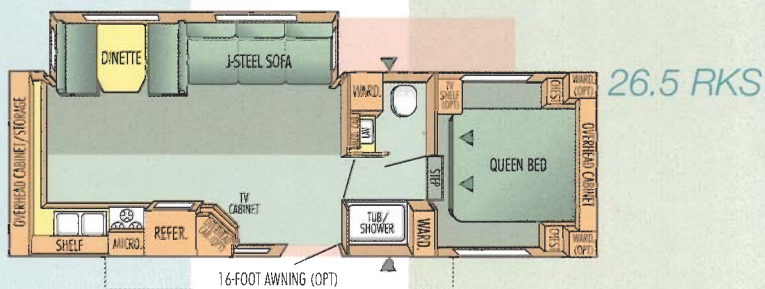




2003 Jay Flight™ Travel Trailer Floorplans



2003 Jay Flight™ Fifth Wheel Floorplans



2003 Jay Flight™ Travel Trailer and Fifth Wheel Specifications

Models	Exterior Length	Exterior Height	Bedroom Interior Height	Unloaded Vehicle Weight (lbs.)	Dry Hitch Weight (lbs.)	Gross Vehicle Weight (lbs.)	Cargo Carrying Capacity (lbs.)	Fresh Water Capacity (gals.) Includes Water Heater (gals.)	Gray Wastewater Capacity (gals.)	Toilet/Black Wastewater Capacity (gals.)
Travel Trailers:										
21 FB	22'-9"	119"	77"	3770	575	5500	1730	37	28	28
24 FB	26'-9"	119"	77"	4320	455	7100	2780	37	28	28
26 FBS	28'-4"	127"	77"	5405	630	8000	2595	37	44	44
27 BH	29'	119"	77"	4655	570	7500	2845	37	28	28
29 BH	30'-6"	119"	77"	4805	505	7600	2795	37	28	28
31 BHS	31'-8"	127"	77"	5815	705	8500	2685	37	28	37
Fifth Wheels										
26.5 RKS	28'-1"	138"	63"	6600	1135	9650	3050	52	64	28
28.5 BHS	29'-3"	138"	63"	6790	1155	9650	2860	52	32	32

Unloaded Vehicle Weight (UVW): Sometimes referred to as "Dry Weight," UVW means the typical weight of this trailer as built at the factory. The UVW, as used in product literature and other promotional materials, does not include cargo, fresh water, LP gas, options or dealer-installed accessories.

Gross Vehicle Weight Rating (GVWR): GVWR means the maximum permissible weight of the trailer, including the UVW plus passengers, personal items, all cargo, fluids, options and dealer-installed accessories. The GVWR is equal to or greater than the sum of the UVW and the CCC.

Cargo Carrying Capacity (CCC): CCC means the maximum weight of all passengers, personal items, food, fresh water, LP gas, tools, other cargo and dealer-installed accessories that can be carried by the trailer. CCC is equal to or less than GVWR minus UVW.

*The addition of options will decrease the CCC.

It is important for your safety and enjoyment that your tow vehicle be adequately sized and equipped to tow and handle the GVWR of the RV you select. Review weights and rating of your tow vehicle and consult a competent advisor for questions or advice. Whether you are new to RVing or a

veteran, get a feel for the performance of your tow vehicle and the RV together before heading out on the roadways. **When you tow an RV, you must drive differently than you do when driving a single vehicle.** Practice hooking up, driving, backing up and braking in a safe environment or seek out professional instruction.

See specification chart above. Jayco® affixes a weight label to each new RV which lists weight information for that vehicle.

2003 Jay Flight™ Travel Trailer and Fifth Wheel Interior Color Selections



Bahama Blue



Bermuda Cinnamon



Freeport Green

2003 Jay Flight™ Travel Trailers & Fifth Wheels

WE BACK WHAT WE BUILD

The Jayco **2+3 Warranty** is a manufacturer's warranty. It doesn't come from your dealer, and it's not an extended warranty! It comes from the people who build Jayco recreational vehicles to the people who buy them. Each Jayco is warranted to the original purchaser for twenty-four (24) months from the date of purchase against defects in materials and workmanship. This is full hitch-to-bumper coverage on towables and bumper-to-bumper on motorized RVs. The Jayco warranty includes a three-year (3) structural guarantee. In addition, our warranty is transferable within the first two (2) years for a \$100 processing fee. Go ahead and compare the Jayco warranty with other manufacturers' warranties. You'll find it's the best in the business! For a copy of the warranty with full terms and conditions, ask your local Jayco dealer or visit our Web site.

Jayco® delivers responsive, reliable after-market customer service



When you purchase a Jayco Recreational Vehicle, you'll also get a support staff dedicated to meeting the needs of you and your dealer. To deliver on this promise, we built a 91,000-square-foot, state-of-the-art facility that seamlessly integrates our Warranty, Customer Service and Service Parts divisions (After Market Services — AMS). Staff from each division can now work more closely together to better provide prompt, accurate service.

For example, the AMS staff can quickly access information on the computer so service representatives can better serve the

needs of Jayco dealers and retail customers. Our service area contains 15 bays that feed into a spacious work area for customers who need assistance during their travels through Indiana.

The Parts and Warranty divisions take advantage of our Jayco Xpress online computer network that links Jayco Customer Service to dealers across the country and allows them to place parts orders, check the status of an order and check pricing and availability.

Dealers participating in the online system can also register new Jayco owners 24 hours a day, seven days a week. That way, when you pull off the dealer's lot, your new unit is already registered with the factory.

Our parts warehouse, equipped with automated carousels and stocked with a large inventory of parts, can provide our dealers with the parts you need so you can get back on the road to enjoying your vacation.

You won't find a more caring after-market service group in the recreational vehicle industry. That's our goal and commitment to you.

In the heart of the Midwest, old-world craftsmen have handed down tried-and-true construction methods from generation to generation. At our headquarters in Middlebury, Indiana, Jayco continues this tradition when building all of our recreational vehicles. Our rugged designs, solid construction and commitment to quality add up to a well-built vehicle you can depend on for years.



See above dealer for further information and prices.



Jayco, Inc. P.O. Box 460 Middlebury, IN 46540
www.jayco.com



As a Jayco owner, you can be part of the Jayco Jafari International Travel Club. Ask your dealer about the Jafari "flight" in your area, write Jayco direct or visit our Web site.

Please Note: All information in this brochure is the latest available at the time of publication approval. Jayco reserves the right to make changes and to discontinue models without notice or obligation.

Pictures in this brochure may show optional equipment. RVs built for sale in Canada may differ to conform to Canadian codes.

Printed on recycled paper.



©2002 Jayco, Inc. 0902-50M Litho in U.S.A.