

2003 Talon ZX Sport Utility Trailers & Fifth Wheels by Jayco

TALON ZX

Bring your fun along



BRING YOUR FUN ALONG IN A TALON ZX™ SPORT UTILITY TRAILER

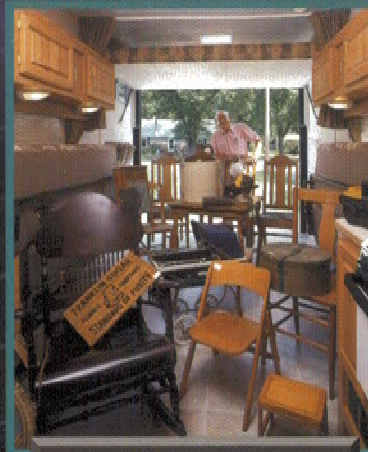


Heavy haul: The large cargo area comes equipped with six beefy tie-down rings that hold 2,500 lbs. each to secure your vehicles and two rear ramp lights. An optional wall with door between cargo and living areas keeps out fuel and oil odors.



What's your passion?

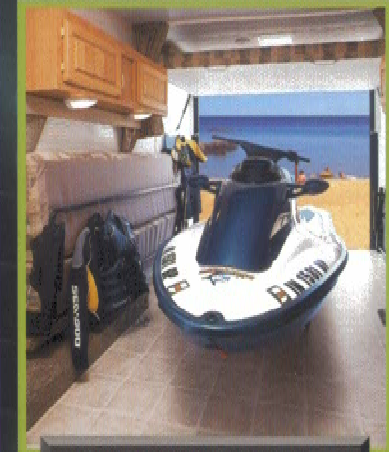
Whatever moves you, Talon ZX gives you space to bring it along.



Old world: Bring home your haul of antiques.



For the dogs: Bring along the best of show.



Make waves: Bring fun on the water.

After a long, hot, dusty day on the trails, you want a better place to sleep than in your truck. After 35 years of building family fun, Jayco® introduces the perfect way to haul your machines and the perfect place to stay rolled into one — Talon ZX™ sport utility trailer.

Rugged Talon ZX sport utility trailers give you loading versatility for

bikes, quads, jet skis or whatever you need in the **large rear cargo area**. Once you blaze a trail to your favorite spot, lower the 7' rear ramp door with **spring and cable assist** and optional **Durafloor™ liner**. Quickly convert from garage to house with **fold-away sofas** and **pull-down queen beds** that provide plenty of places to rest.



Over and out: Keep tabs on your kids or other family members with the optional Audiovox® family two-way radio system, including four hand-held radios and holder/charger.



Jayco was proud to participate in and serve as the official recreational vehicle of The Park Programs/Summer-Fun Sweepstakes in 2002, involving our nation's National Parks.

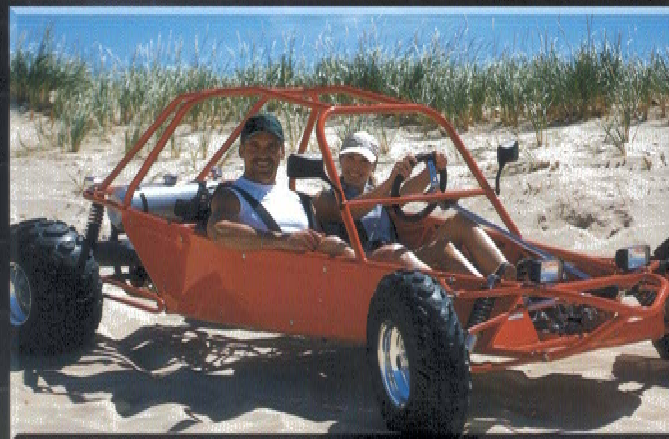
Ready to roll: A ton of cool features make your Talon ZX™ as tough as it is good-looking. Chrome racing wheels are standard and the optional overslung axles give you an extra 5 1/2" of ground clearance (trailers) for going places other trailers wouldn't dare. The rubber roof with 3/8" decking and R-11 insulation protects the top, the Duratex™ underbelly guards the bottom and .024 high-gloss aluminum siding or optional high-gloss fiberglass sidewalls with front cap stand strong all around.



T28 A exterior



Load up: Use the handy optional ladder and stash your extra gear on the optional roof luggage rack. You can even hang out up there to soak up some sun or get a better view of the race from crowded pits.



Instant bed: The rear bunk pulls down for sleeping and pushes up for extra space.

Hit the sack: Not only do you have room for your bikes, ATV or jet ski, but the fold-away sofas and pull-down queen bed also give you room for four.

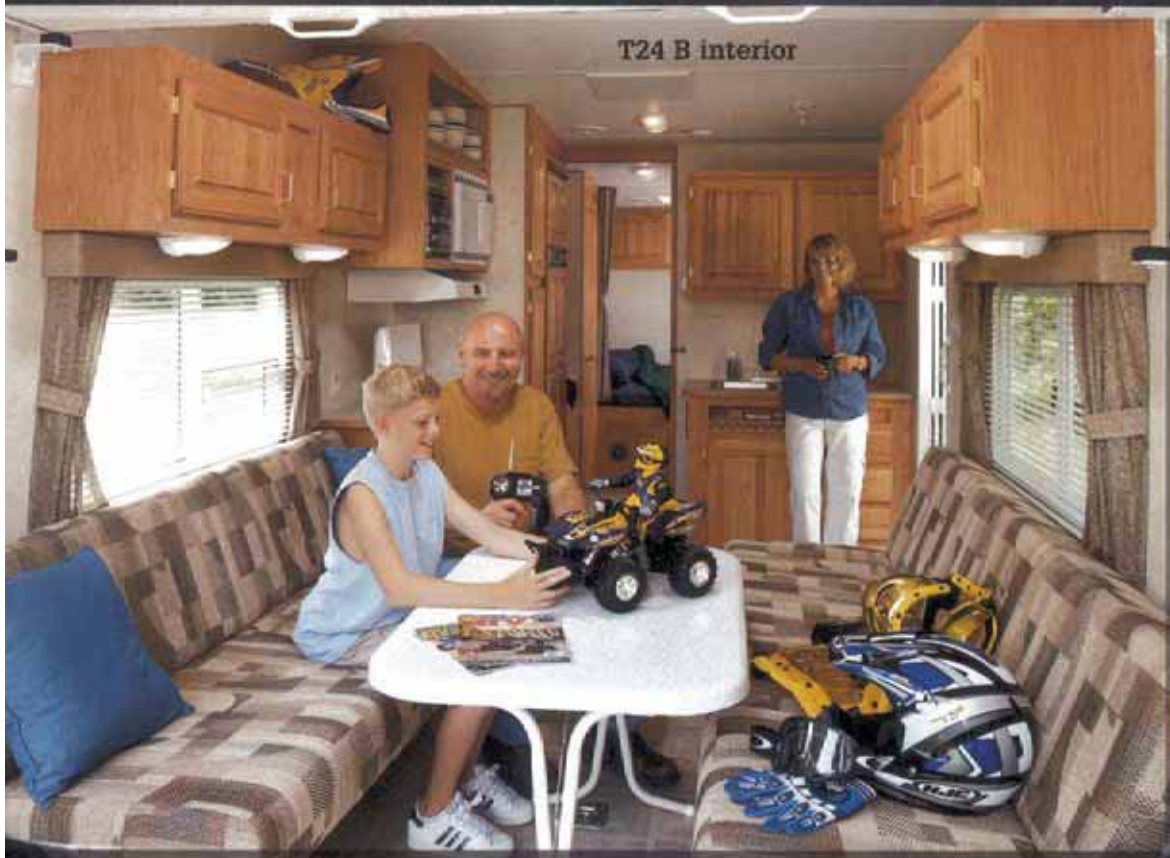


Clean up: Wash away the outside in the well-appointed bathroom with ABS shower, medicine cabinet with mirror, 12V power vent and optional skylight.



MAKE THE OUTDOORS A LITTLE LESS RUGGED

T24 B interior



Just because you ride some of the roughest trails or tracks doesn't mean you want a rough time when you get back. Inside Talon ZX™, you'll feel at home with features such as window mini blinds, optional carpeting in the living/bay area and an optional bookshelf stereo system. The optional 13,500- or

15,000-BTU central air keeps you cool and the vinyl flooring throughout cleans up easily. The kitchen goes beyond simple utility with a 3-burner range with 9,000-BTU SuperBurner™ and piezo igniter, 17" oven, range hood with light and fan, large stainless steel sink and color-coordinated countertops.



Chow down: No more running out for burgers. The kitchen features an optional Samsung microwave oven and 6-cu.-ft. or optional 8-cu.-ft. refrigerator/freezer. Or, cook outdoors using the optional outside stove.



Drink it in: Get consistent-tasting drinking water with the optional built-in water filtration system.



Tune in: Groove to your favorite music on the optional bookshelf stereo system with two cassette decks and room for five CDs.



Keep track: Check the status of all systems with the monitor panel.

EXPERIENCE A FULL-THROTTLE FIFTH WHEEL



Hit the road, and the trails, in a fifth wheel designed to keep up with your fast-paced life. Talon ZX™ keeps you comfortable between rides in the optional **rear patio screen room** that lets you enjoy some fresh air without fighting mosquitoes. Cook dinner in the **well-appointed kitchen** and you won't have to waste time going out. You won't have

to keep running out for water, either, with the large-capacity **106-gallon fresh water tank**.

The roomy F36 Z model expands your living space with the **SuperSlide™ slideout**, and the cargo area is big enough to haul a dune buggy. When it's time to snooze, take it easy in the **front bedroom** or choose the optional **pull-down queen bed**. (F33 X only)



Stretch out: The bedroom gives you the room you need with a 60" x 74" mattress, headboard storage and access to basement storage.

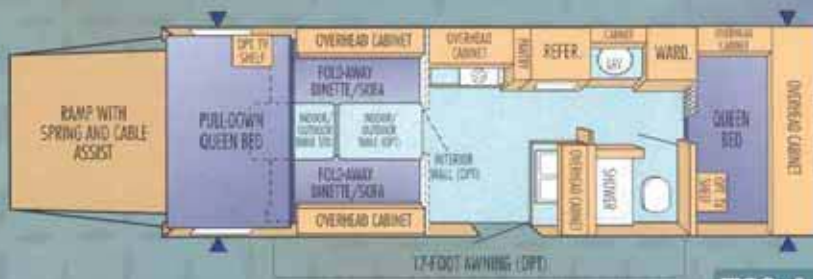
Open spaces: Set the rear ramp level and kick back in the optional patio screen room, which can support a hefty 1,000 lbs.

Dinner time: We build the kitchen as tough as the rest of Talon ZX. Our lighter-colored Fairfield Oak cabinets are built to last. We craft cabinet doors using traditional, strong mortise-and-tenon joints. And we use real-wood drawers, not plastic tubs. Choose optional raised-panel oak doors.

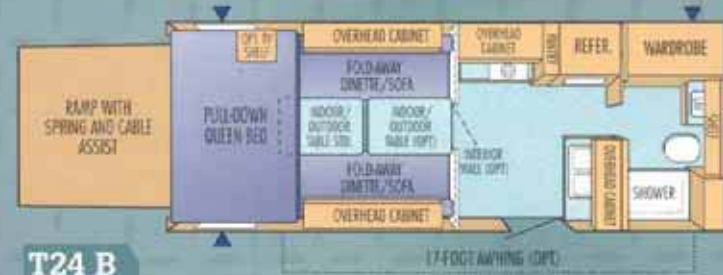
Hit the road: Get exactly what you need at your site to stay comfortable. The optional Carefree® awning gives you a place to work on your machine or relax out of the sun or rain. You also get two 110V exterior outlets and an optional underfloor spare that stays out of your way.



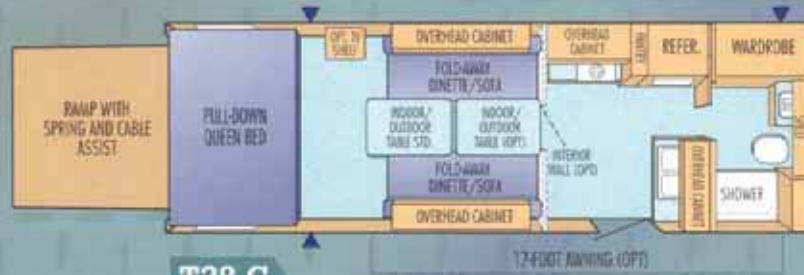
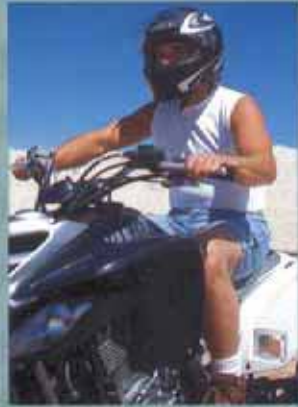
2003 TALON ZX™ SPORT UTILITY TRAILERS FLOORPLANS



T28 A



T24 B



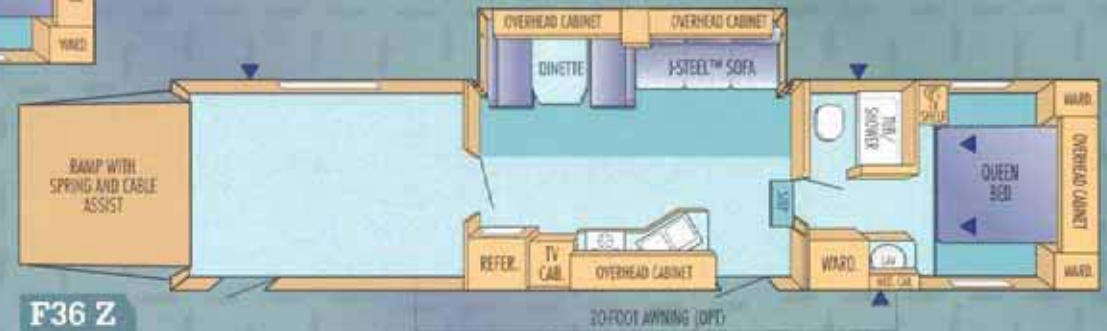
T28 C



2003 TALON ZX™ SPORT UTILITY FIFTH WHEELS FLOORPLANS



F33 X



F36 Z

2003 TALON ZX™ SPORT UTILITY TRAILERS AND FIFTH WHEELS SPECIFICATIONS

Utility Trailers Models	Exterior Length	Exterior Height *	Interior Height	Interior Cargo Length	Unloaded Vehicle Weight (lbs.)	Dry Hitch Weight (lbs.)	Gross Vehicle Weight Rating (lbs.)	Cargo Carrying Capacity (lbs.)	Fresh Water Capacity [^] (gals.)	Gray Wastewater Capacity (gals.)	Toilet/Black Wastewater Capacity (gals.)
T28 A	29'-11"	136"	77"-93"	124"	5915	815	10,900	4985	106	50	50
T24 B	25'-11"	131"	77"-93"	184"	5380	825	10,400	5020	106	50	50
T28 C	29'-11"	131"	77"-93"	136"	5605	1020	10,900	5295	106	50	50

Fifth Wheels

F33 X	34'-11"	145"	98"	175"	7530	2050	14,500	6970	110	50	50
F36 Z	N/A	N/A	N/A	144"	N/A	N/A	N/A	N/A	N/A	N/A	N/A

* Includes Air Conditioner

[^]Includes Water Heater

Unloaded Vehicle Weight (UVW): Sometimes referred to as "Dry Weight," UVW means the typical weight of this trailer as built at the factory. The UVW, as used in product literature and other promotional materials, does not include cargo, fresh water, LP gas, options or dealer-installed accessories.

Gross Vehicle Weight Rating (GVWR): GVWR means the maximum permissible weight of the trailer, including the UVW plus passengers, personal items, all cargo, fluids, options and dealer-installed accessories. The GVWR is equal to or greater than the sum of the UVW and the CCC.

Cargo Carrying Capacity (CCC): CCC means the maximum weight of all passengers, personal items, food, fresh water, LP gas, tools, other cargo and dealer-installed accessories* that can be carried by the trailer. CCC is equal to or less than GVWR minus UVW.

*The addition of options will decrease the CCC.

It is important for your safety and enjoyment that your tow vehicle be adequately sized and equipped to tow and handle the GVWR of the RV you select. Review weights and rating of your tow vehicle and consult a

competent advisor for questions or advice. Whether you are new to RVing or a veteran, get a feel for the performance of your tow vehicle and the RV together before heading out on the roadways. **When you tow an RV, you must drive differently than you do when driving a single vehicle.** Practice hooking up, driving, backing up and braking in a safe environment or seek out professional instruction.

See specification chart above. Jayco® affixes a weight label to each new RV which lists weight information for that vehicle.

2003 TALON ZX™ SPORT UTILITY TRAILERS AND FIFTH WHEELS INTERIOR COLOR SELECTIONS



Sandstone



Cypress Sage



Blue Denim

2003 Talon ZX™ Sport Utility Trailers and Fifth Wheels Standards and Options

STANDARD EXTERIOR FEATURES

- 110V exterior outlet (2 total)
- 1800-lb. ramp door
- Rear ramp lights (2)
- Non-skid ramp flooring
- 7' ramp door with spring and cable assist
- 28" radius entry door
- Chrome racing rims
- Cable hookup
- Cam locks on ramp door
- 15" radial tires (trailers), 16" radial tires (fifth wheels)
- E-Z Lube® axles
- Rubber roof with 3/8" decking
- Tapered truss rafters
- White radius-cornered windows
- Duralex™ underbelly covering
- R-7 insulated sidewalls and floor
- R-11 insulated roof
- 6" cambered I-beam frame with 2" x 2" reinforced tubing (non-slideouts)
- Double entry step (trailers)
- Triple entry step (fifth wheels)
- Outside shower
- Hitch safety chains (trailers)
- Break-away switch
- Dual battery rack (trailers)
- Locking insulated baggage doors
- .024 high-gloss aluminum siding
- Switched patio and off-door side light
- Rain gutters with spouts
- 2000-lb. tongue jack (trailers)

STANDARD INTERIOR FEATURES

- Color-coordinated countertops
- Deep, tipped overhead cabinets
- Large stainless steel sink
- Oak flat-panel doors
- TV antenna with power booster
- Vinyl flooring throughout
- Mini blinds throughout
- Flip-up dinette/sofa (2 total) (most models)
- Fiberglass indoor/outdoor table (1 total) (most models)
- 60" x 80" pull-down queen bed (trailers)
- 2500-lb. capacity tie-down rings, anchored to frame (6 total)

STANDARD BATH FEATURES

- Large lavatory bowl
- 24" x 32" ABS shower (trailers)
- Medicine cabinet with mirror (some models)
- Shower curtain
- 12V power roof exhaust vent
- Marine toilet
- Towel holders

STANDARD BEDROOM FEATURES

- 60" x 74" innerspring mattress
- Access to basement storage (trailers)
- Headboard storage compartment
- Pull curtain closure

STANDARD APPLIANCES

- High-efficiency gas furnace with wall thermostat
- 6-gallon gas water heater
- 6-cu.-ft. refrigerator/freezer
- 3-burner range with 9000-BTU SuperBurner® and piezo igniter
- 17" oven
- Range hood with light and fan
- Dual 30-lb. LP gas tanks with auto changeover
- ABS LP tank cover (trailers)

STANDARD POWER AND WATER FEATURES

- Uponor® water lines
- Water heater bypass
- 12V water pump
- 45-amp. power converter with battery charger
- Systems monitor panel

STANDARD SAFETY FEATURES

- Smoke detector
- Fire extinguisher
- LP leak detector

OPTIONAL FEATURES

- Shock absorbers
- TV shelves
- Raised-panel oak doors
- Carpet in living/bay area
- Cargo mats
- DuraFloor™ liner
- Cargo bay wall with door
- Pull-down queen bed (fifth wheels)
- High-gloss fiberglass exterior sidewalls with front cap
- Tinted safety glass
- Bath skylight
- Luggage rack and ladder
- Foil insulation metal/fiberglass
- Insulated holding tanks (includes fresh water tank)
- Stabilizer jacks (2 pair, trailers) (1 pair, fifth wheels)
- Electric jacks
- Snap jacks
- Water purifier
- * Power winch (2500-lb.)
- 13,500-BTU central A/C
- 15,000-BTU central A/C
- Attic fan (front, rear or both)
- Microwave
- 8-cu.-ft. large double-door refrigerator
- 6-gal. gas/electric auto-ignition water heater
- Range cover
- Outside stove
- Outside grill
- Generator prep with 30-gal. gas tank
- 4000-watt generator with 30-gal. gas tank
- Fuel station only
- Fuel station with 30-gal. gas tank
- Carefree® patio awning
- Center tension rafter
- Security lights
- * Bookshelf stereo system
- Indoor/outdoor table (2nd)
- Family 2-way radio system
- Rear ramp screen
- Patio screen room
- Boja package (includes 16" tires, front diamond plating and cargo organizers, trailers only)
- Underfloor-mounted spare tire
- Overlung axles (includes triple step) (trailers)
- Dual battery box (fifth wheels)

* New for 2003



DISCOVER THE PERFECT PLACE TO END YOUR RIDE

Pull up to a Talon ZX[™] sport utility trailer or fifth wheel after a day of riding and you'll see why it makes the ideal home base. Put your gear in the **side storage trunk** and save interior room. Clean off trail mud and dust at the **outside shower** before tracking it inside. Then pull out the **portable gas barbecue grill** and enjoy dinner close to nature. Afterward, relax inside by the

rear ramp screen. Flip on the **security lights** at night to make some adjustments to your ATV and gas up for tomorrow at the **fuel station**. The brawny optional **power winch** makes it a cinch to pull your quad inside. Secure the **cam locks** on the ramp door and your machine is safe for the night. And you're ready for another day of blazing new paths.



Pack it in: The exterior storage compartments with locking, insulated baggage doors give you plenty of space, and convenient pass-through access on some models makes room for longer items. The Filon[™] Plus baggage doors are super smooth and look great.

Cookout: Our optional portable gas barbecue grill lets you get that great grilled flavor. And it comes with a handy carrying case.



Hit the showers: The outside shower includes hot and cold faucets, rugged ABS plastic hose and shower head.



Fill 'er up: No more carrying gas cans in the trailer. Pump gas just like at the station from the optional fuel station with 30-gallon tank. Choose the optional generator prep, the 4,000-watt generator or just the fuel station.

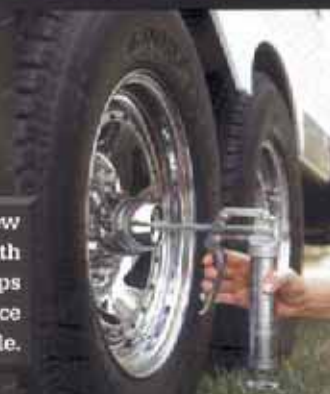


Light it up: Two high-intensity lights, one patio and one door-side, provide added safety and security and give you light under the awning to work on your vehicle at night.



Breezeway: Get great ventilation with the optional rear ramp screen.

Quick shot: Our new E-Z Lube[™] axles with removable caps make maintenance simple.



2003 TALON ZX™ SPORT UTILITY TRAILERS AND FIFTH WHEELS

WE BACK WHAT WE BUILD

The Jayco 2+3 Warranty is a manufacturer's warranty. It doesn't come from your dealer, and it's not an extended warranty! It comes from the people who build Jayco recreational vehicles to the people who buy them. Each Jayco is warranted to the original purchaser for twenty-four (24) months from the date of purchase against defects in materials and workmanship. This is full hitch-to-bumper coverage on towables and bumper-to-bumper on motorized RVs. The Jayco warranty includes a three-year (3) structural guarantee. In addition, our warranty is transferable within the first two (2) years for a \$100 processing fee. Go ahead and compare the Jayco warranty with other manufacturers' warranties. You'll find it's the best in the business! For a copy of the warranty with full terms and conditions, ask your local Jayco dealer or visit our Web site.

Jayco® delivers responsive, reliable after-market customer service



When you purchase a Jayco Recreational Vehicle, you'll also get a support staff dedicated to meeting the needs of you and your dealer. To deliver on this promise, we built a 91,000-square-foot, state-of-the-art facility that seamlessly integrates our Warranty, Customer Service and Service Parts divisions (After Market Services — AMS). Staff from each division can now work more closely together to better provide prompt, accurate service.

For example, the AMS staff can quickly access information on the computer so service representatives can better serve the needs of Jayco dealers and retail customers. Our service

area contains 15 bays that feed into a spacious work area for customers who need assistance during their travels through Indiana.

The Parts and Warranty divisions take advantage of our Jayco Xpress online computer network that links Jayco Customer Service to dealers across the country and allows them to place parts orders, check the

status of an order and check pricing and availability. Dealers participating in the online system can also register new Jayco owners 24 hours a day, seven days a week. That way, when you pull off the dealer's lot, your new unit is already registered with the factory.

Our parts warehouse, equipped with automated carousels and stocked with a large inventory of parts, can provide our dealers with the parts you need so you can get back on the road to enjoying your vacation.

You won't find a more caring after-market service group in the recreational vehicle industry. That's our goal and commitment to you.

In the heart of the Midwest, old-world craftsmen have handed down tried-and-true construction methods from generation to generation. At our headquarters in Middlebury, Indiana, Jayco continues this tradition when building all of our recreational vehicles. Our rugged designs, solid construction and commitment to quality add up to a well-built vehicle you can depend on for years.



See above dealer for further information and prices.



Jayco, Inc. P.O. Box 450 Middlebury, IN 46540
www.jayco.com



As a Jayco owner, you can be part of the Jayco Jafari International Travel Club. Ask your dealer about the Jafari "flight" in your area, write Jayco direct or visit our Web site.

Please Note: All information in this brochure is the latest available at the time of publication approval. Jayco reserves the right to make changes and to discontinue models without notice or obligation.

Pictures in this brochure may show optional equipment. RVs built for sale in Canada may differ to conform to Canadian codes.

Printed on recycled paper.



©2002 Jayco, Inc. 1102-50M Litho in U.S.A.