

Good Times, Great Value!

2004 CLASS C MOTORHOMES by JAYCO

ESCAPADE



Jayco 
Family owned. Family focused.



Slate

(A)



Topaz

(B)



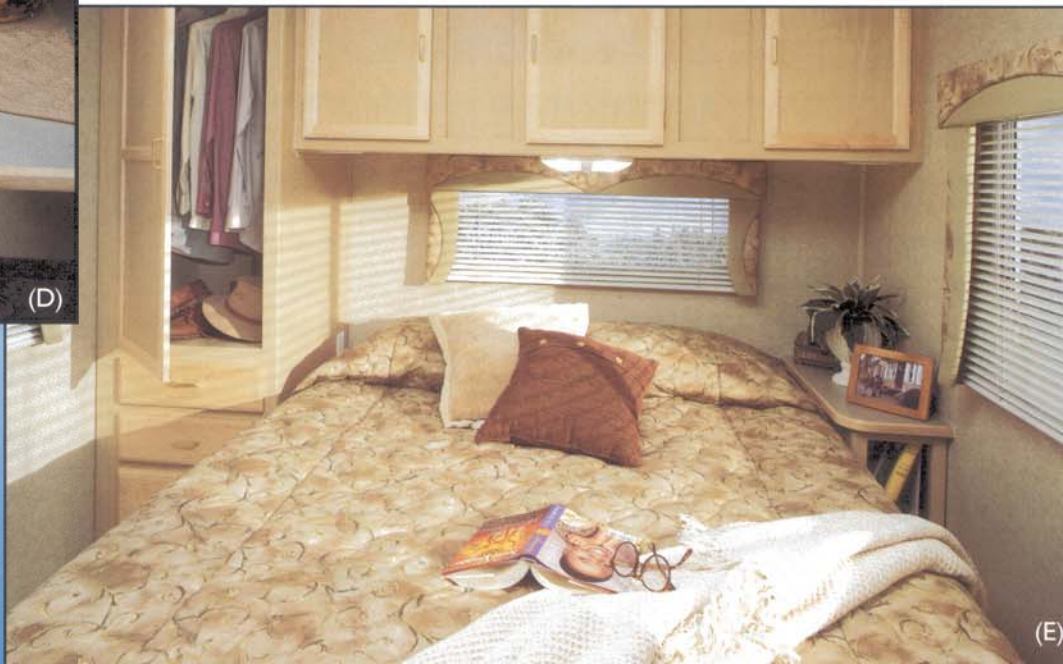
(C)

Pamper Your Family with Affordable Luxury!

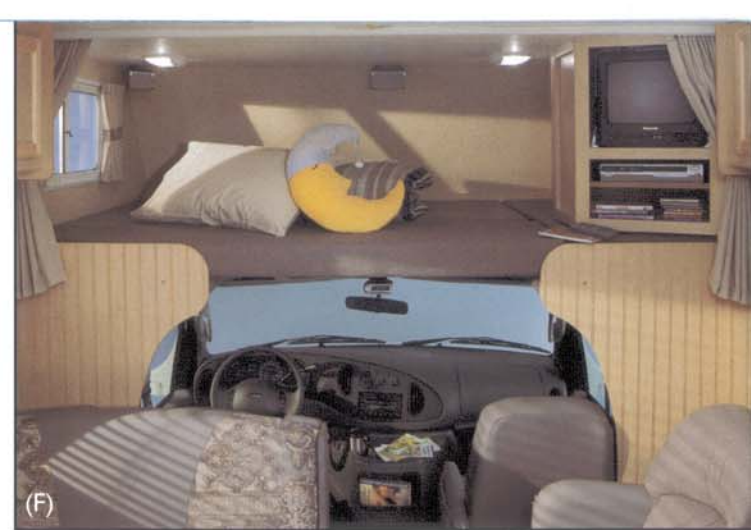
Introduce your crew to the good times of motorhome RVing with Jayco's value-designed Escapade. Homelike interiors surround you with eye-pleasing features. Coordinated interior décor schemes include Slate (A) and Topaz (B). Bathrooms (C) are extra inviting and convenient with large medicine cabinet with mirror, skylight, hi-profile stool and linoleum floor. For 2004, the spacious kitchen dining and living areas (D) have been spruced up with beveled T-mold countertop edging and warm Westview maple cabinetry. The residential-style, almond colored six-panel bathroom door tops off the comfortable, homey look. In the bedroom, (E) you'll like the luxurious feel of deep pile carpeting with thick padding. The queen bed (most models) with deluxe mattress and bedspread, plus the large wardrobes, bring an extra measure of style and function. Up front, a luxurious bedroom over the cab (F) gives you private quarters for two adults. A 13" color TV is available as an option. In-dash AM/FM/CD stereo system (G) entertains you on the road.



(D)



(E)



(F)



(G)



Sirius® Satellite Radio System gives you nationwide access to more than 100 digital radio channels. It is part of the Explorer package of options (subscription required after three months pre-paid service).

A Dolby® Digital home theatre system with DVD surround sound is also available as part of the Explorer package, along with many other most-wanted options.

H. Escapade standard features include a sturdy steel rear bumper, spare tire, carrier and cover.

I. 4,000-watt Onan® generator – formerly an option – is now standard on the Escapade.

J. Lockable radius exterior storage compartments with door pulls provide lots of room for travel gear.

K. You'll enjoy the sleek look of Escapade's Filon® fiberglass sidewalls. A roof ladder is also standard for added convenience.

L. Deluxe side view mirrors and fiberglass running boards bring more travel convenience on the road – both are standard features.



(H)



(I)



(J)



(K)



(L)

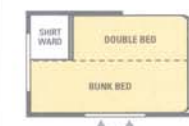
Outside Storage Compartment

Linoleum
Carpet

23U



24M



28G



31A



MODEL	Exterior Length	Exterior Height w/AC	Gross Vehicle Weight Rating (Lbs.)	Chassis & Engine Size	Wheelbase	Furnace, Auto-Ignition (BTUs)	Fresh Water Capacity (Gal.) Includes W/H	Gray Waste Tank Capacity (Gal.)	Black Waste Tank Capacity (Gal.)	Exterior Storage (Cu.-Ft.)
23U	23' 3"	130"	11,500	Ford 6.8L/V10	159"	25,000	31	39	35	12
24M	24'	130"	11,500	Ford 6.8L/V10	159"	25,000	37	39	35	10
28G	28' 7"	130"	14,050	Ford 6.8L/V10	185"	31,000	37	39	37	31
31A	31' 2"	130"	14,050	Ford 6.8L/V10	218"	31,000	37	39	37	50

Standards

CHASSIS FEATURES

- Automatic Transmission w/ Overdrive
- Factory Air Conditioning and Cruise Control
- Power Anti-Lock Brakes and Power Steering
- Power Window and Door Locks
- Tilt Steering Wheel
- Rubber Body Mounts
- Dome Light
- *Deluxe Non-Remote Control Side-View Mirrors

HEAT, POWER, WATER FEATURES

- City Water Hookup
- Water Heater Bypass Kit
- Shurflo® Demand Water Pump
- Auto-Ignition Furnace w/ Wall Thermostat
- 56-Lb. Chassis-Mount LP Gas Tank
- Carbon Monoxide Detector
- Fire Extinguisher
- LP Leak Detector
- *Heated Holding Tanks (12-Volt Pads)
- 30 AMP Power Cord
- *Outside Shower
- *4000-Watt Onan® Generator
- Deluxe 110V to 12V Converter
- Conveniently Located Water Pump Switches
- Battery Disconnect Switch

CAB FEATURES

- *Deluxe AM/FM Stereo w/ CD Player
- Upgrade Recliner Seats w/ Full Front/Back Adjustment
- Lap and Shoulder Safety Belts
- Padded Fabric Head Liner
- Auxiliary Start Switch
- Cab Area Privacy Curtain

EXTERIOR FEATURES

- *Fiberglass Exterior Sidewalls (Including Entrance and Baggage Doors)
- Dead-Bolt Lock on Entrance Door
- *Roof Ladder
- Lockable Radius Exterior Storage Compartments w/ Door Pulls
- White Radius-Cornered Windows
- Radius-Cornered Entrance Door
- Patio Light
- 110V Exterior Receptacle
- Entry Assist Handle
- *Fiberglass Running Boards
- Steel Powder-Coated Rear Bumper
- TPO Roof
- *Spare Tire, Carrier and Cover
- *Wheel Liners

LIVING ROOM FEATURES

- *Westview Maple Cabinetry Throughout
- Roomy Overhead Cabinets
- Overhead TV Cabinet
- *Beadboard Wings Behind Cab
- *Satellite Prep
- Crank-Up TV Antenna w/ Signal Booster
- Fabric-Covered Valances
- Deep Pile Carpeting w/ Thick Padding
- 12V High Intensity Lighting Package
- Cable TV Hook-Up

KITCHEN FEATURES

- Mini Blind in Galley
- Divided Silverware Drawer
- 3-Burner Range w/ Oven
- Microwave Oven w/ Carousel
- *Linoleum Floor in Kitchen
- *Beveled T-Mold Countertop Edging
- Molded Double Bowl Sink

BATHROOM FEATURES

- Shower or Tub/Shower (See Floorplans)
- Linoleum Floor in Bathroom
- Medicine Cabinet w/ Mirror
- Toilet
- Bath Skylight w/ Light (Most Models)
- *Residential Style 6-Panel Passage Doors

BEDROOM FEATURES

- Queen Bed w/ Deluxe Mattress (Select Models)
- Bed Struts for Easy Lift-Up Beds,
- Finished Storage Underneath
- *TV Shelf
- Deluxe Bedspread
- Large Bedroom Wardrobes (Select Models)
- *Deep Pile Carpeting w/ Thick Padding
- Mini Blinds

Options

- Chairs (2) - In Lieu of Dinette (23U)
- Chairs & Table (28G)
- Double Bed w/ Bunk - In Lieu of J-Steel Sofa (24M)
- Linoleum Throughout
- Tinted Safety Glass
- Attic Fan
- Center Tension Rafter
- Protective Shipping Shield
- B" Color TV w/ Remote
- Exterior Entertainment Center

*ESCAPADE "EXPLORER PACKAGE"

Dolby Digital 5.1 Home Theatre System with DVD Surround Sound, Bathroom Power Vent, Sirius® Satellite Radio System (subscription required after first three months prepaid service), Bi-fold Range Cover, 3-Burner Range with Oven, 6-Gal. Gas/Electric Auto-Ignition Water Heater, Towing Hitch and Wiring, Large Double Door Refer (8cu ft), Bi-fold Shower Door, Patio Awning, 15,000 BTU Roof Air Conditioning and Electric Step (Double).

*New for 2004

2004 ESCAPADE™

We Back What We Build



The Jayco 2+3 Warranty is a manufacturer's warranty. It doesn't come from your dealer, and it's not an extended warranty! It

comes from the people who build Jayco recreational vehicles to the people who buy them. Each Jayco is warranted to the original purchaser for twenty-four (24) months from the date of purchase against defects in materials and workmanship. This is full hitch-to-bumper coverage on towables and bumper-to-bumper on motorized RVs. The Jayco warranty includes a three-year (3) structural guarantee. In addition, our warranty is transferable within the first two (2) years for a \$100 processing fee. Go ahead and compare the Jayco warranty with other manufacturers' warranties. You'll find it's the best in the business! For a copy of the warranty with full terms and conditions, ask your local Jayco dealer or visit our Web site.



Security on the Road 24/7

You also get Jayco's Customer First emergency roadside service program free for the first year. Customer First is offered through Coach Net, the largest RV emergency road service in the country. A toll-free number gives you immediate access to dependable service when and where you need it. Here are the highlights:

- Emergency roadside assistance throughout the U.S. and Canada, for your motorhome and one additional family car. The Customer First system rushes aid to you for breakdowns, jump starts, tire changes, fuel delivery, even lockouts.
- Customer First offers traveler's checks. It also offers a \$1,000 reward for helping capture the perpetrators of a vehicle theft or hit and run.
- A 24-hour toll-free message service helps you stay in touch with family and friends anywhere in the country in case of emergency.
- \$500 trip interruption reimbursement covers a rental car, lodging, meals, even a plane ticket home if you're in an accident.
- Toll-free nationwide service appointment assistance. Just call us and we'll set up an appointment and we'll take care of the rest.
- Free trip routing and map service. Easy-to-follow full-color maps, travel tips, places to see and more.
- Service assistance. Get simple directions to the nearest of more than 6,800 qualified agencies throughout North America.



Please Note: All information in this brochure is the latest available at the time of publication approval. Jayco reserves the right to make changes and to discontinue models without notice or obligation. It is important that you review weights and ratings before you purchase a new motorhome. Unloaded Vehicle Weight (UVW): Sometimes referred to as "Dry Weight," UVW means the typical weight of this motorhome as built at the factory. The UVW, as used in product literature and other promotional materials, does not include cargo, fresh water, LP gas, options or dealer-installed accessories. Gross Vehicle Weight Rating (GVWR): GVWR means the maximum permissible weight of the motorhome, including the UVW plus all cargo, passengers, personal items, fluids, options and dealer-installed accessories. The GVWR is equal to or greater than the sum of the UVW and the NCC. Cargo Carrying Capacity (CCC): CCC means the maximum weight of all passengers, personal belongings, food, fresh water, LP gas, tools, other cargo and dealer-installed accessories that can be carried by the trailer. CCC is equal to or less than GVWR minus UVW. Jayco affixes a weight label to each new RV which lists weight information for that vehicle. Pictures in this brochure may show optional equipment. RVs built for sale in Canada may differ to conform to Canadian codes.

As a Jayco owner, you can be part of the Jayco Safari International Travel Club. Ask your dealer about the Safari "flight" in your area, write Jayco direct or visit Jayco.com.



Jayco, Inc., P.O. Box 460, Middlebury, IN 46540
www.jayco.com

©2003 Jayco, Inc. 8/JTA-20462 1203-20H Litho in U.S.A.