

*Make the memories you'll keep forever.*

2004 CLASS C MOTORHOMES by JAYCO

GREYHAWK & GRANITE RIDGE

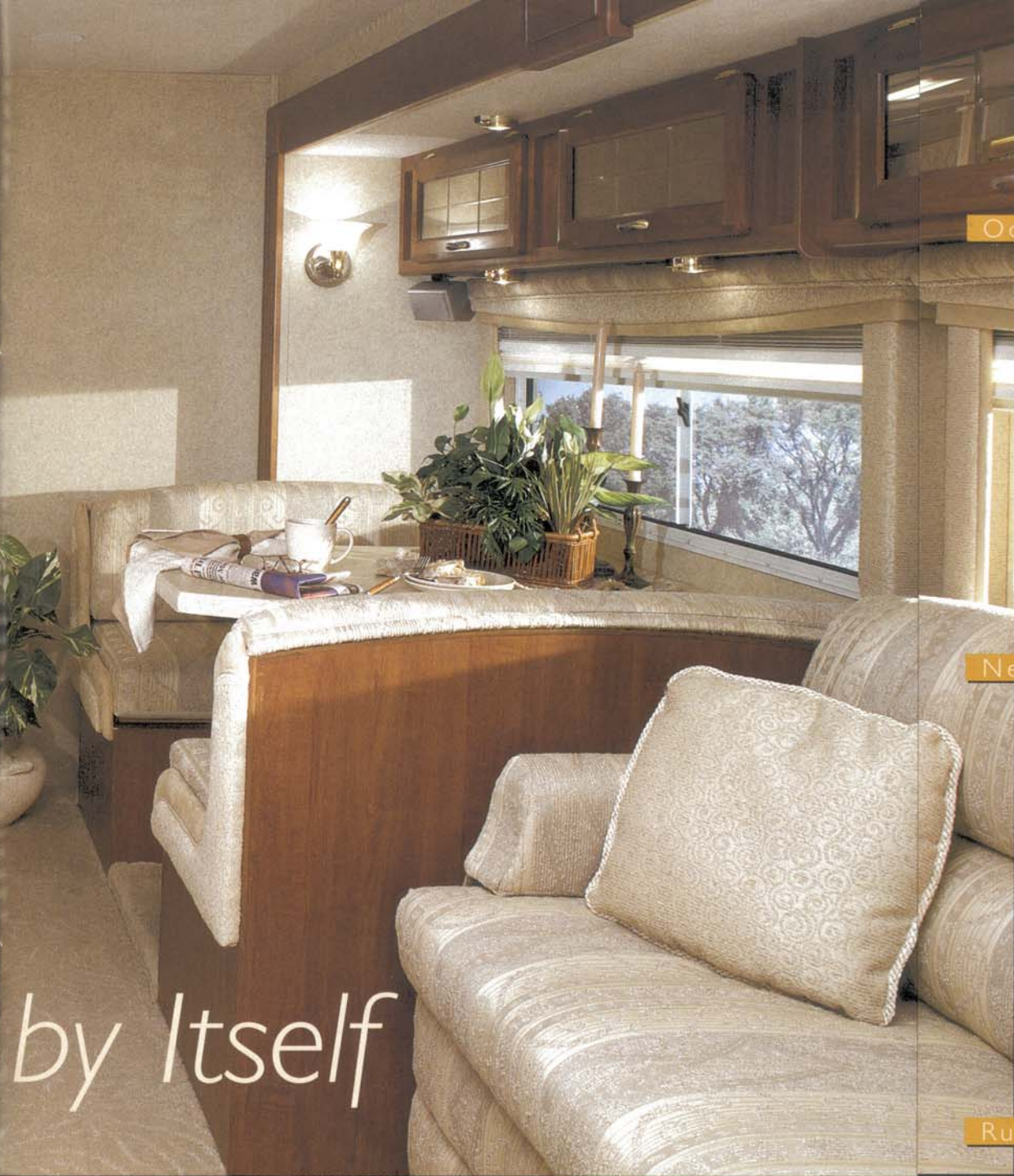


Family owned. Family focused.



**GRANITE RIDGE™**

*In a Class*



Ocean Breeze



Nearly Nickel



Rum Raisin



There's no other motorhome like Jayco's Granite Ridge, combining the upscale comforts of a Class A coach with the convenience and maneuverability of a Class C.

You get a luxurious interior, a private rear bedroom and basement storage. You also get the features Class C owners wouldn't do without. Like the ability to sleep two adult couples in comfort and privacy without having to convert the flip-sofa or dinette. And a sumptuous, ergonomically correct, Detroit-engineered cockpit, with solid truck-body doors that let you easily step in and out at street level.

What's more, the 2004 Granite Ridge is more luxurious than ever. New standard features include a 4,000-watt generator, 15,000 BTU central

air conditioner, power driver seats, maple cabinetry with slideout hardwood fascia trim, front entertainment center with 24-inch flat-screen TV, a premium in-dash AM/FM/CD stereo system and more.

The popular Denali Package now includes Dolby Digital 5.1 Home Theatre System with DVD Surround Sound, power bath vent and Sirius® Satellite Radio System (subscription required after first three months prepaid service) in addition to the exterior barbecue grill, rear-view video system, exterior entertainment center and electric awning.

Granite Ridge provides you with all the class, all the convenience and all the automotive engineering you expect from Jayco.



## The days you spend

on the road, in the campground and visiting the wonders of north America...the days and nights you share with family and friends...those are the good times that last a lifetime. And what better way to bring those memories home than in a Greyhawk?

Greyhawk's choice of seven models from 24' to 31' includes a great choice for any family's travels. Its family-friendly price takes you farther. And knowing you have the support of the Jayco family from coast to coast lets you travel with greater peace of mind.

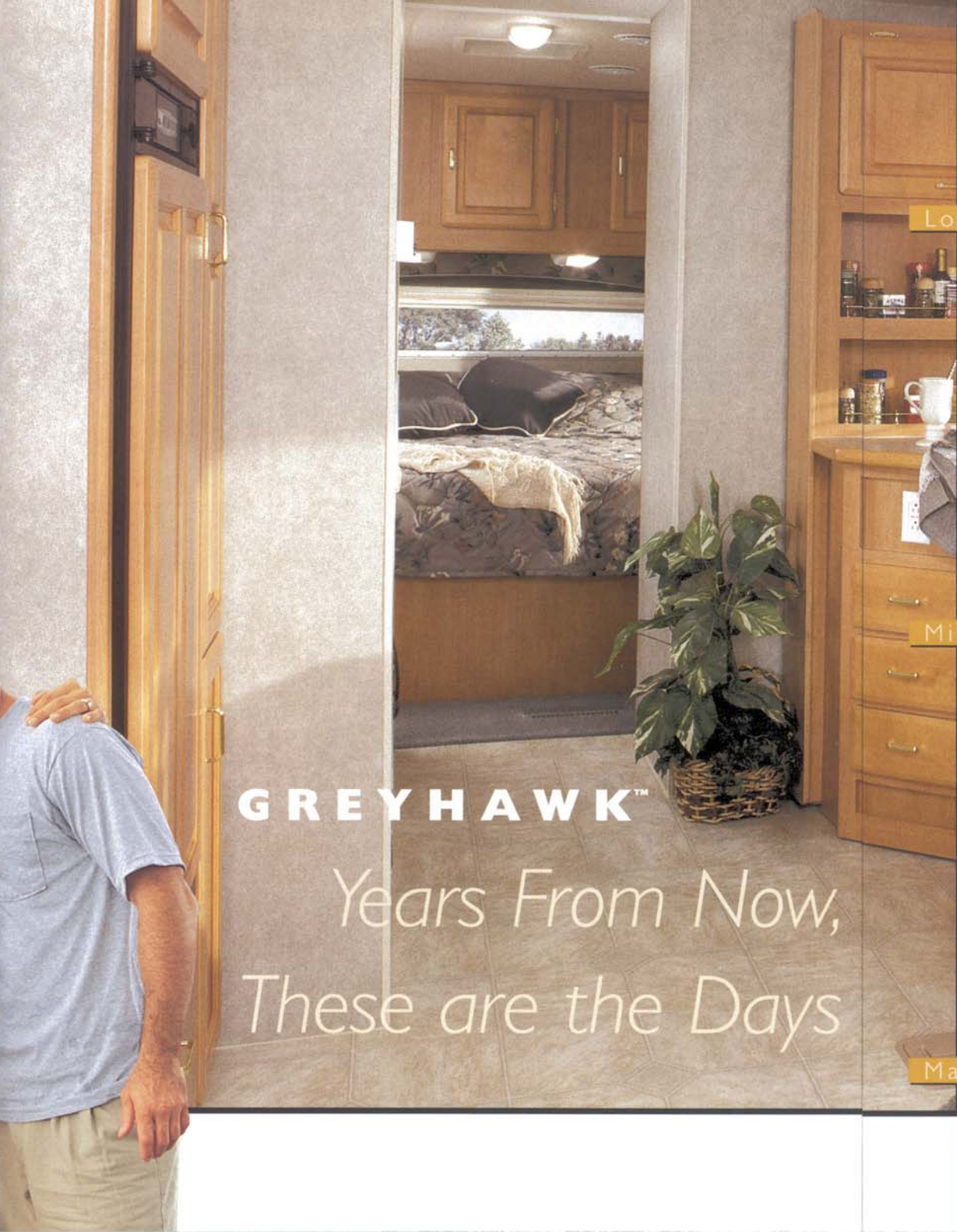
For 2004, we've packed even more value into Greyhawk. New standard features include a 4,000-watt generator, patio awning, rear window, premium in-dash AM/FM/CD stereo

system, 15,000 BTU air conditioner, holding tank sprayer, heated holding tanks in all models, electric step and outdoor shower.

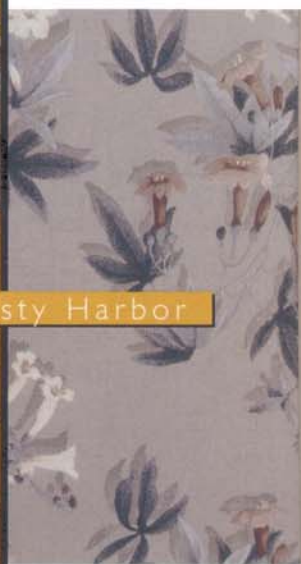
The Sierra Package includes Dolby Digital 5.1 Home Theatre System with DVD Surround Sound, power bath vent and Sirius® Satellite Radio System (subscription required after first three months prepaid service) in addition to the woodgrain dash, day-night shades, remote control mirrors, exterior entertainment center and barbecue grill.

Greyhawk is bumper-to-bumper fun, built by people who know more about family good times than anyone.





London Fog



Misty Harbor

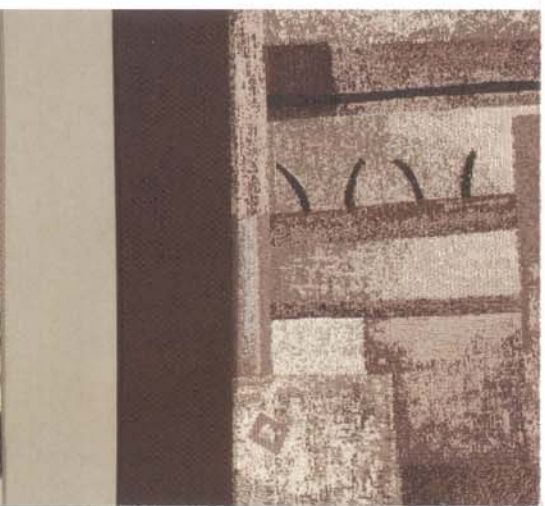


**GREYHAWK™**

*Years From Now,  
These are the Days*



Maritime Maroon



The image shows the interior of a motorhome. On the left, a man in a light blue polo shirt and khaki pants stands with his hand on his shoulder. The main area is a kitchen with light wood cabinets, a black microwave, a sink, and a stove. A dining table with a floral patterned seat and a white tablecloth is in the foreground. In the background, a bedroom with a bed and a window is visible. A potted plant sits on the floor between the kitchen and the bedroom.

**GREYHAWK™**

*Years From Now,  
These are the Days You'll Remember.*



Now,  
Days You'll Remember.







## Family Fun to Go

A. Select models of Granite Ridge and Greyhawk motorhomes have pass-through basement storage, just like Class A motorhomes.

B. The overcab entertainment center with 24-inch flat-screen TV is standard in the Granite Ridge and optional in all Greyhawk models.

C. Sirius® Satellite Radio System featuring nationwide access to more than 100 digital radio channels, is part of Denali and Sierra packages (subscription required after three months prepaid service).

D. A luxurious bedroom over the cab (standard on Greyhawk) gives you private sleeping quarters for two adults. You don't get that in a Class A motorhome. Shown here with optional front window.





## Easy Driving, Easy Living

Another big advantage of a Jayco Class C motorhome: The best automotive cab and chassis Ford has to offer. A beautiful automotive instrument panel, with instrument cluster and controls that are easy to read and use. Deep, comfortable seats. Tilt, cruise, power windows. Everything right at your fingertips. Your chassis is backed by a three-year or 36,000-mile warranty, with a six-year, 100,000-mile warranty against corrosion.

## Strength and Comfort

Greyhawk and Granite Ridge are built to keep you and your family safe, snug and comfortable through years of family fun. We start with a tubular steel superstructure. That's made even stronger and more rigid by our exclusive Tuff-Shell vacuum-bonded roof, walls and floor. Our 2+3 Warranty®, unique in the industry, gives you complete bumper-to-bumper protection for two years plus a three-year structural guarantee. And it's transferable for two years.

### ROOF

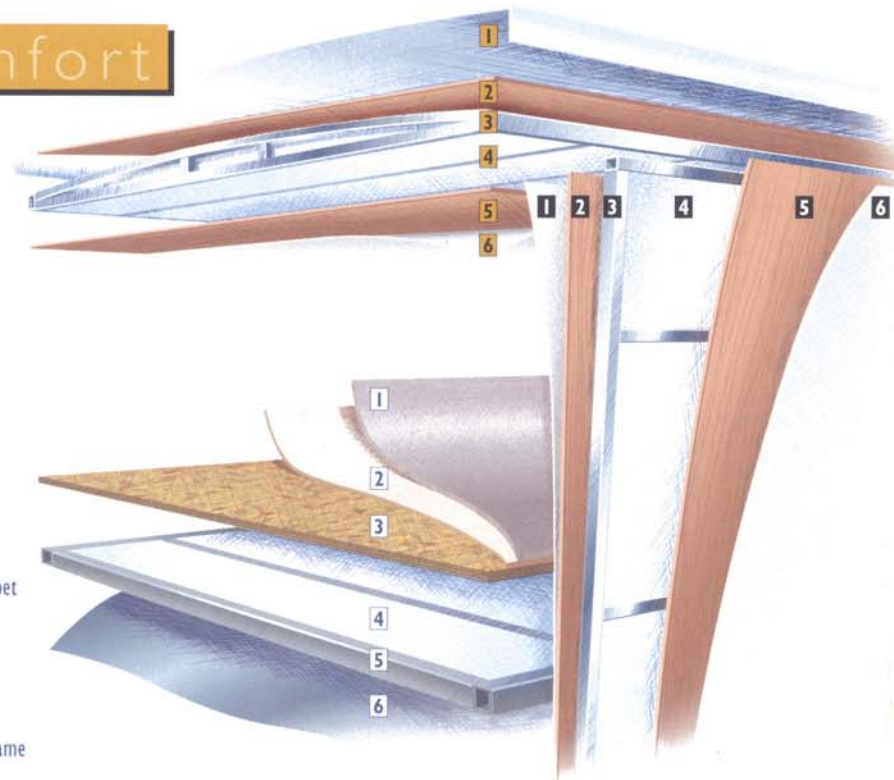
- 1 One-Piece Seamless TPO Roof
- 2 1/8" Luaun
- 3 Aluminum Roof Frame
- 4 Tapered Bead Foam Insulation
- 5 1/8" Luaun
- 6 Ozite Sound-Deadening Fabric Ceiling

### WALLS

- 1 Vinyl Decorative Wall Covering
- 2 1/8" Luaun
- 3 1" Tubular Aluminum Wall Frame
- 4 Bead Foam Insulation
- 5 1/8" Luaun
- 6 Filon Plus Exterior Sidewall

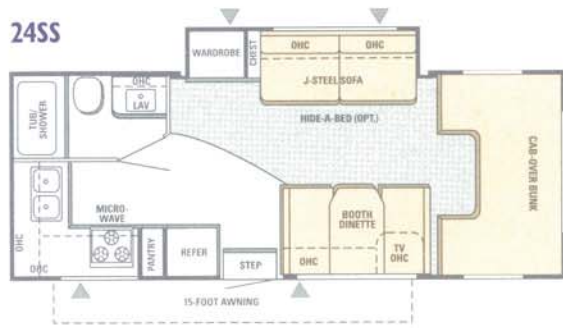
### FLOOR

- 1 Residential-Quality Carpet
- 2 1/2" Foam Pad
- 3 3/8" Structurwood
- 4 Bead Foam Insulation
- 5 1-1/2" Tubular Floor Frame
- 6 Waterproof Underbelly



# Floorpla

24SS



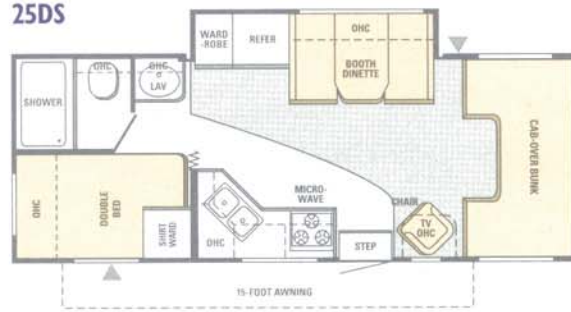
27DS\*



3ISS



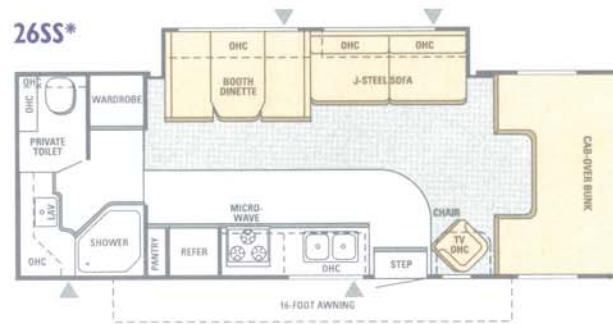
25DS



28GS\*



26SS\*



29GS\*



## Floorplan Options

Models	Options
24SS	B, C
25DS	A, B, C
26SS	B
27DS	B, C
28GS	B, C
29GS	E
3ISS	B
2900GS	E

▼ Outside Storage Compartment

\* Full Basement Models

# ns

## 2004 GRANITE RIDGE

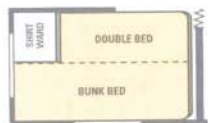
2700DS\*



2900GS\*



3100SS\*



Bunk Bed Option (A)



Entertainment Center & Slide-Out Bed Option (B)



J-Steel Sofa w/ Table Option (C)



Chairs w/ Table Option (D)

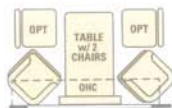


Table w/ 2 Chairs Option (E)

Linoleum  
Carpet



Granite Ridge shown above with Irish Cream painted skirt.

# 2004 GREYHAWK™ & GRANITE RIDGE™

# Standard

## CHASSIS FEATURES

	Greyhawk	Granite Ridge
Automatic Transmission with Overdrive	S	S
Factory Air Conditioning and Cruise Control	S	S
Power Anti-Lock Brakes and Power Steering	S	S
Window and Door Locks	S	S
Tilt Steering Wheel	S	S
Rubber Body Mounts	S	S
Dome Light	S	S
*Deluxe Remote Control Side-View Mirrors	Package	S
*Hellwig® Helper Springs	S	S

## CAB FEATURES

	Greyhawk	Granite Ridge
Ultraleather™ Driver & Passenger Seat w/ 6-Way Power Driver's Seat	N/A	0
Six-Way Power Driver's Seat	N/A	0
*Premium AM/FM Stereo with CD Player	S	S
Recliner Seats with Full Front/Back Adjustment	S	S
Lap and Shoulder Safety Belts	S	S
Padded Fabric Head Liner	S	S
Auxiliary Start Switch	S	S
Deluxe Cab Floor Mats	N/A	S
*Woodgrain Dash Kit	Package	S
Front Cab-Over Window	0	N/A
Exterior Cab Privacy Shield	0	0

## HEAT, POWER, WATER FEATURES

	Greyhawk	Granite Ridge
6-Gal. Gas/Electric Auto-Ignition Water Heater	S	S
City Water Hookup	S	S
Water Heater Bypass Kit	S	S
Shurflo™ Demand Water Pump	S	S
Auto-Ignition Furnace w/ Wall Thermostat	S	S
63-Lb. Chassis-Mount LP Gas Tank	S	S
Carbon Monoxide Detector	S	S
Fire Extinguisher	S	S
LP Leak Detector	S	S
*Ducted or Radiant-Heated Holding Tanks	S	S
*Holding Tank Sprayer	S	S
*15,000 BTU Central Air (Ducted Most Models)	S	S
Attic Fan (Bedroom)	0	0
28' Power Cord	S	S
*4000-Watt Onan® Generator	S	S
Deluxe 110V to 12V Converter	S	S
400-Watt Inverter	0	0
Conveniently Located Water Pump Switches	S	S
In-Floor Ducted Heating (N/A 24SS)	S	S
Interior Command Center®	S	S
*Pre-Wired for Satellite Dish (Roof)	S	S

## LIVING ROOM FEATURES

	Greyhawk	Granite Ridge
Fairfield Oak Cabinetry Throughout	S	N/A
North Ridge Maple Cabinetry Throughout	0	S
*Concord Cherry Throughout	N/A	0
Roomy Overhead Cabinets	S	S
Front Entertainment Center w/ 24" Flat Screen TV	0	S
Overhead TV Cabinet (N/A w/ Front Ent. Center)	S	N/A
13" TV w/ Remote and Swivel Base	0	N/A
J-Steel™ Sofa w/ Drawer Storage (Select Models, See Floorplans)	S/O	S/O
J-Steel™ Sofa with Hide-A-Bed (24SS and 26SS Only)	0	N/A
Padded Wings Behind Cab	S	S
Crank-Up TV Antenna w/ Signal Booster	S	S
*Day/Night Shades	Package	S
Fabric-Covered Lambrequin Valances	S	S
Deep Pile Carpeting w/ Thick Padding	S	S
Labeled Light Switch Center	S	S
12V High Intensity Lighting Package	S	N/A
Fluorescent and Halogen Lighting Package	N/A	S
Cable TV Hook-Up	S	S
*Clock	S	S
*Decorative Sofa Pillows	S	S
Ozite® Ceiling Liner Throughout	S	S
*Hardwood Trim Package (Slideout Models Only)	N/A	S

## KITCHEN FEATURES

	Greyhawk	Granite Ridge
Recessed Sink	S	S
Water Purification System	S	S
Battery Switch	S	S
Single-Lever Chrome Faucet	S	N/A
Single-Lever Chrome Faucet w/ Sprayer	N/A	S
Cutting Boards (2)	S	S
Three-Burner Range w/ 17" Oven	S	S
Bi-Fold Range Cover	S	S
Flush-Mount Double-Door Refrigerator	S	S
Refrigerator w/ Ice Maker	N/A	0
Mini Blind in Galley	S	S
Divided Silverware Drawer	S	S
Microwave Oven w/ Carousel	S	S
*Linoleum Floor in Kitchen	S	S
Coffee Maker	0	S
Oak-Edge Countertop	S	N/A
Corion-Edge Countertop	N/A	S
Plexiglas Splash Guard (Select Models)	S	S

## BATHROOM FEATURES

	Greyhawk	Granite Ridge
Shower or Tub/Shower (See Floorplans)	S	S
Pleated Shower Door (N/A 26SS)	S	N/A
Glass Shower Door (Std 26SS)	0	S
Linoleum Floor in Bathroom	S	S
Wood Medicine Cabinet w/ Mirrors	S	S
Foot-Pedal Stool	N/A	S
Bath Skylight w/ Light (Most Models)	S	S
Towel Bars	S	S
Removable Clothes Rod in Tub (Most Models)	S	S
Toothbrush Holder, Soap Holder	N/A	S
*Residential Style 6-Panel Passage Doors	S	S

## BEDROOM FEATURES

	Greyhawk	Granite Ridge
Queen Bed w/ Pillow Top Mattress (Most Models)	S	S
Bed Struts for Easy Lift-Up Beds, Finished Storage Underneath	S	S
*Day/Night Shades	Package	S
Jalousie Windows	S	S
Recessed TV Shelf (Most Models, See Floorplans)	S	S
Deluxe Bedspread	S	S
Large Bedroom Wardrobes (Select Models, See Floorplans)	S	S
Halogen Reading Lights	S	S
Two Pillow Shams (Queen Bed)	N/A	S
*Rear Window (N/A 26SS)	S	S

Granite Ridge shown below with Mocha Cream painted skirt.



# Models & Options



## EXTERIOR FEATURES

	Greyhawk	Granite Ridge
*Filon Plus Sidewalls (Including Entrance and Baggage Doors)	S	S
Utility Center (Full Basement Models Only)	S	S
Dead-Bolt Lock on Entrance Door	S	S
Roof Ladder	S	S
Lockable Exterior Storage Compartments w/ Door Pulls	S	S
Pass-Through Storage Compartment w/ Light(s) (Select Models)	S	S
Class A Motorhome-Style Baggage Doors	N/A	S
White Radius-Cornered Windows	S	S
Radius-Cornered Entrance Door	S	S
Patio Light	S	S
110V Exterior Receptacle	S	S
Dump-Valve Access Door on Full Basement Models	S	S
Entry Assist Handle	S	S
Fiberglass Running Boards	S	S
Steel Powder-Coated Rear Bumper	S	S
TPO Roof	S	S
*Patio Awning	S	N/A
*12V Patio Awning with Remote	N/A	Package

## EXTERIOR FEATURES (cont)

	Greyhawk	Granite Ridge
Center Tension Rafter	0	S
*Electric Double Entrance Step	S	S
*Wheel Liners	S	S
Spare Tire, Carrier and Cover (24SS)	S	N/A
Spare Tire w/ Crank-Down Mechanism (Full Basement Models)	S	S
Towing Hitch and Wiring	S	S
Tinted Safety Glass Windows	S	S
*Outside Shower	S	S
Slide-Out Battery Tray (Single)	S	S
Rear Cornercaps	N/A	S
Third Brake Light	S	S
*Two (2) Painted Skirt Options	N/A	0
Exterior Privacy Shield (Cab Window)	0	0
*Protective Shipping Shield (Front of Chassis)	0	0
*Back-Up Camera and Monitor	0	Package

## Granite Ridge "DENALI PACKAGE"

Dolby Digital 5.1 Home Theatre System with DVD Surround Sound, Portable BBQ Grill with Carrying Case, Back-Up Camera and Monitor, 12V Awning with Remote, Exterior Entertainment Center, Power Vent in Bathroom, Sirius® Satellite Radio System (subscription required after first three months prepaid service)

## Greyhawk "SIERRA PACKAGE"

Dolby Digital 5.1 Home Theatre System with DVD Surround Sound, Woodgrain Dash Kit, Day/Night Shades, Portable BBQ Grill with Carrying Case, Deluxe Remote Control Side-View Mirrors, Exterior Entertainment Center, Power Vent in Bathroom, Sirius® Satellite Radio System (subscription required after first three months prepaid service)

\*New for 2004

# Specifications

## 2004 GREYHAWK™ & GRANITE RIDGE™

MODEL	Exterior Length	Exterior Height w/AC	Gross Vehicle Weight Rating (Lbs.)	Chassis & Engine Size	Wheelbase	Furnace, Auto-Ignition (BTUs)	Fresh Water Capacity (Gal.) Includes W/H	Gray Waste Tank Capacity (Gal.)	Black Waste Tank Capacity (Gal.)	Exterior Storage (Cu.-Ft.)
<b>Greyhawk</b>										
24SS	25' 1"	130"	14,050	Ford 6.8L/V10	181"	25,000	44	39	35	16
25DS	25' 1"	130"	14,050	Ford 6.8L/V10	181"	25,000	44	39	35	40
26SS	27' 2"	136"	14,050	Ford 6.8L/V10	176"	31,000	44	40	36	50
27DS	27' 11"	136"	14,050	Ford 6.8L/V10	182"	31,000	44	40	36	51
28GS	28' 8"	136"	14,050	Ford 6.8L/V10	185"	31,000	44	40	36	52
29GS	30' 5"	136"	14,050	Ford 6.8L/V10	218"	31,000	39	40	35	N/A
31SS	31' 4"	130"	14,050	Ford 6.8L/V10	218"	31,000	44	40	37	41
<b>Granite Ridge</b>										
2700DS	27' 11"	136"	14,050	Ford 6.8L/V10	182"	31,000	44	40	36	51
2900GS	30' 5"	136"	14,050	Ford 6.8L/V10	218"	31,000	39	40	35	N/A
3100SS	31' 4"	136"	14,050	Ford 6.8L/V10	218"	31,000	44	40	36	71



# Jayco:

# Family Matters

Family is everything to Jayco. We're a family business. We build motorhomes as if our own family were buying them. And, like family, we don't mind if you call us up when you need something special.

We know what a Jayco motorhome really means. Adventures and dreams. And above all, good times to last a lifetime, shared with your friends and family, children and grandchildren.

Everything we do goes to support your family's good times—from product design to extensive dealer training to service.

## Extend Your Family—

join the Jafari Club. Joining other Jayco owners in the Jayco Jafari Club opens a new world of family fun and savings. There are fabulous tours, rallies and local chapter activities, all packed with fun, friendship and ways to add to your RVing know-how. Members get discounts at many theme parks and special attractions on campground directories, RV magazines, Jafari international activities and Jayco apparel. You can even get a Jafari Club MasterCard.

## Security on the Road 24/7

You also get Jayco's Customer First emergency roadside service program free for the first year. Customer First is offered through Coach Net, the largest RV emergency road service in the country. A toll-free number gives you immediate access to dependable service when and where you need it. Here are the highlights:

- Emergency roadside assistance throughout the U.S. and Canada, for your motorhome and one additional family car. The Customer First system rushes aid to you for breakdowns, jump starts, tire changes, fuel delivery, even lockouts.
- Customer First offers traveler's checks. It also offers a \$1,000 reward for helping capture the perpetrators of a vehicle theft or hit and run.
- A 24-hour toll-free message service helps you stay in touch with family and friends anywhere in the country in case of emergency.



- \$500 trip interruption reimbursement covers a rental car, lodging, meals, even a plane ticket home if you're in an accident.
- Toll-free nationwide service appointment assistance. Just call us and we'll set up an appointment and we'll take care of the rest.
- Free trip routing and map service. Easy-to-follow full-color maps, travel tips, places to see and more.
- Service assistance. Get simple directions to the nearest of more than 6,800 qualified agencies throughout North America.

Please Note: All information in this brochure is the latest available at the time of publication approval. Jayco reserves the right to make changes and to discontinue models without notice or obligation. It is important that you review weights and ratings before you purchase a new motorhome. Unloaded Vehicle Weight (UVW): Sometimes referred to as "Dry Weight," UVW means the typical weight of this motorhome as built at the factory. The UVW, as used in product literature and other promotional materials, does not include cargo, fresh water, LP gas, options or dealer-installed accessories. Gross Vehicle Weight Rating (GVWR): GVWR means the maximum permissible weight of the motorhome, including the UVW plus all cargo, passengers, personal items, fluids, options and dealer-installed accessories. The GVWR is equal to or greater than the sum of the UVW and the NCC. Cargo Carrying Capacity (CCC): CCC means the maximum weight of all passengers, personal belongings, food, fresh water, LP gas, tools, other cargo and dealer-installed accessories that can be carried by the trailer. CCC is equal to or less than GVWR minus UVW. Jayco affixes a weight label to each new RV which lists weight information for that vehicle. Pictures in this brochure may show optional equipment. RVs built for sale in Canada may differ to conform to Canadian codes.

As a Jayco owner, you can be part of the Jayco Jafari International Travel Club. Ask your dealer about the Jafari "flight" in your area, write Jayco direct or visit [Jayco.com](http://Jayco.com).



MOTORHOMES BY JAYCO®

Jayco, Inc., P.O. Box 460, Middlebury, IN 46540  
[www.jayco.com](http://www.jayco.com)

©2003 Jayco, Inc. BJA-20392 0903-100M Litho in U.S.A.