



Jay Feather™
2008 Ultra Lite Weight Travel Trailers by Jayco®

Live Large, Tow Light



2008 JAY FEATHER Ultra Lite Weight Travel Trailers by Jayco®



LGT



EXP



EX-PORT



SPORT



AMERICA'S MOST **LIVEABLE** RV'S.



Tow a Jay Feather With Your SUV* and Make Trips a Breeze

Jay Feather

2008 ULTRA LITE WEIGHT TRAVEL TRAILERS

After a heavy workload during the week, wouldn't it be nice to take off and feel light as a feather? Jay Feather Ultra Lite Weight travel trailers can be easily towed by most SUVs and mini-vans so you're always ready for a quick getaway. With a Jay Feather, you can enjoy the outdoor views provided by Mother Nature, then enjoy the indoor conveniences provided by Jayco. From the extra thick mattresses to the extra durable construction, you'll always rest easy.

- » Strong and Lite Weight frame features E-Coat™ rust-proof protection
- » Vacuum-bonded lamination creates stronger walls, roofs and floors
- » Tor-Flex™ independent suspension provides more ground clearance and better handling
- » Seamless one-piece rubber roof is puncture-resistant and covered by 12-year warranty
- » American-made Norcold® 6 cu. ft. refrigerator lets you adjust the temperature
- » Solid wood cabinetry is crafted with screwed stile construction and cabinet doors with mortise-and-tenon joints for durability
- » Unparalleled 2-year Co-Pilot Warranty offers peace of mind



* Due to their ultra Lite Weight design, Jay Feather models may be towed by most SUVs and mini-vans. Consult your automotive vehicle manufacturer's latest towing guide (available at the dealership) or your owner's manual. Certain optional equipment may be required and other restrictions may apply. Do not exceed the recommended towing capacity of your vehicle.

Which Jay Feather Fits Your Family?



JAY FEATHER LGT™

- » Exterior lengths from 25' to 31'
- » Our most spacious and fully equipped Jay Feather model
- » More seating, storage and amenities to accommodate longer trips



JAY FEATHER EXP™

- » Exterior lengths from 19' to 29'
- » Expandable sleeping areas
- » Maximizes living space and minimizes towing weight



JAY FEATHER EX-PORT™

- » Combines compact style of the SPORT with expandability of the EXP
- » Light enough to be towed by most SUVs and mini-vans



JAY FEATHER SPORT™

- » Exterior lengths from 16' to 21'
- » Our most lite weight and most compact style
- » Perfect for a weekend away



Celebrating 40 Years of Liveability

The Jayco story began in 1968 with a humble desire to build more comfortable and practical ways for families to explore the world together. Jayco has grown to become the largest privately owned manufacturer of recreation vehicles in North America. While our product line is more diverse than ever before, every unit we build shares a common attribute — liveability. Because we believe every journey should be easy to enjoy.

Jay Feather LGT™



A Great Year to Buy

In honor of Jayco's 40th Anniversary, we've added special features to selected 2008 Jay Feather models including a Carefree® 12 volt Travel'r awning, flat screen LCDTV and adjustable Dream Dinette™. Ask your Jayco dealer for complete details.





» For the Space You Want Without the Weight You Don't

The Jay Feather LGT lets you enjoy the towing efficiencies of an Ultra Lite Weight travel trailer and still get the interior space and features you really want. You'll find plenty of room to unwind, as well as plenty of comfortable seating, convenient storage and decorative finishes.



A skylight brightens the ABS tub surround in the well-equipped bathroom.



The hide-a-bed offers round-the-clock relaxation.



The bedroom features a queen bed with quilted spread, storage under the bed base, a bi-fold privacy door and roof vent.



Everything you need is at your fingertips in the fully equipped kitchen, which includes a residential-style sink and new countertop extension.

Jay Feather EXP™



» For Compact Towing That Turns Into Spacious Sleeping

Expand your vacation options with the Jay Feather EXP. These expandable RVs increase the living space after you reach your destination, but exterior length is kept to a minimum for more aerodynamic towing while you drive. This expandability makes the Jay Feather EXP a smart choice whether you're under the covers or on the road.



Whip up a meal quickly in this handy kitchen featuring a 6 cu. ft. Norcold® refrigerator with adjustable temperature control, 3-burner range, microwave and double-bowl sink.



Once you reach your destination, enjoy additional sleeping space in the Jay Feather EXP's slideout models.

Jay Feather EX-PORT™



» For Big Adventures You Can Tow With a Mini-Van

We combined the compact style of the Jay Feather SPORT with the expandability of the Jay Feather EXP to create the Jay Feather EX-PORT. The result is a fun-loving travel trailer that's light enough to be towed by most SUVs and mini-vans on the market. It comes with all the daytime essentials, then expands to increase your sleeping space at night.



Sleek touches such as the curved shower track add a contemporary flair to the bathroom.



Meals are easy to prepare in the EX-PORT's efficient, fully equipped kitchen.

Jay Feather SPORT™



» For the Ultra Lite Weight Weekender That's Also Light on Price

You'll really look forward to the weekends with the affordable Jay Feather SPORT. Under 23' long, it's compact enough to take on just about any outdoor adventure. Yet it sleeps up to five people and features a full kitchen and full bath. Could this be the year to say goodbye to your tent?



The SPORT lets you speed through cooking with its efficient kitchen equipment.



Hardwood drawers include built-in cutlery trays for easy organization.

treadlightly!
OFFICIAL SPONSOR



Jayco proudly sponsors Tread Lightly!, a nonprofit organization whose mission is to empower generations to enjoy the outdoors responsibly through education and restoration.

Jayco Builds Lasting Value

Jay Feather travel trailers are constructed with high quality materials using production techniques perfected over the past 40 years. Count on yours to look good, perform well for years and provide excellent resale value.



1. FRP smooth fiberglass sidewalls
2. 1/8" plywood
3. R-7 bead-foam insulation in sidewalls (R-9 in SPORT and EXP roof, R-17 in LGT roof, R-9 in EXP & LGT floor)
4. Electro Galvanized (EGS) metal backing strips
5. Welded tubular aluminum sidewall framework
6. Seamless one-piece rubber roof with 12-year limited warranty
7. Tinted safety glass windows
8. Enclosed underbelly with Poly Flex™ one-piece moisture barrier covering reduces drag for better fuel economy and protects from grime and road debris (LGT models only)
9. Carpet pad provides enhanced durability and comfort
10. Attractive, easy-care carpet



A LEGACY OF CRAFTSMANSHIP

Jayco's dedicated production team includes Amish craftsmen who build with well-honed woodworking techniques passed down for generations, and skilled seamstresses who produce our upholstery, bedding and draperies with great attention to detail.



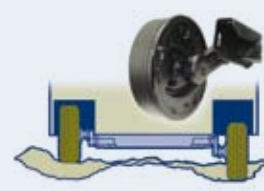
Jay Feather EXP & EX-PORT's Lite Weight steel frame is 10-15% lighter and significantly more rigid than the frame of conventional travel trailers. Tapered rails place the strongest part of the frame over the axles. Instead of welding, our modular frame design features "huck" bolt assembly and interlocking dimples.



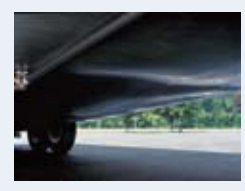
Corrosion-resistant frames are completed with a 12-stage E-Coat™ finishing system. (SPORT, EX-PORT & EXP series only)



TuffShell™ walls and floor are constructed using a vacuum-bonded lamination process. TuffShell™ construction results in a smoother finish and a more durable body than traditional pinch-roller construction.



TorFlex® independent torsion-axle suspension gives more ground clearance, provides a smooth ride, makes towing easier and reduces wear and tear by absorbing bumps.



Enclosed underbelly with Poly Flex™ one-piece moisture barrier covering reduces drag for better fuel economy and protects from grime and road debris. (LGT series only)

Jay Feather Standards and Options

Standard Bathroom Equipment

	LGT	EXP	EX-PORT	SPORT
12V roof vent				•••
ABS tub surround				•
Glass shower door (select models)		•		
Marine toilet w/foot flush		••••		
Medicine cabinet with mirror		••••		
Residential 3 panel passage door			•	
Residential 6 panel passage door		••		
Shower curtain with curved shower track (select models)		••••		
Skylight in tub/shower (select models)		••		
Towel holder		••••		
Vanity mirror			•	

Standard Bedroom Equipment

	LGT	EXP	EX-PORT	SPORT
60" front and rear bed (select models)				••
Bi-fold privacy door		•		
Decorative reading lights		•		
Deep quilted cushions for bunk(s)			•	
Exhaust vent			•	
Fan lights in bunk (2)			•	
Oversized storage drawer under bed base		•		
Queen bed size bunk mats (2)				•
Quilted bed mat				••
Quilted bedspread		•		
Roof vent				•
Shirt wardrobe		•		•
TV shelf (select models)		•		

Standard Construction Features

	LGT	EXP	EX-PORT	SPORT
5/8" seamless Structurwood® main floor decking with PolyFlex™ underbelly				•
78" ceiling height		••••		
Bead-foam insulation (R-17 roof, R-9 floor, R-7 walls)		•		
Bead-foam insulation (R-9 roof, R-9 floor, R-7 walls)		•••		
Cabinetry crafted with screwed stile construction		••••		
Cable support system for bunk ends (interior mount)		••		
Cambered structural steel C-channel frame		•		
E-Coat™ protected frame		••••		
E-Coat™ protected A-frame		•		
Electric-powered slideout (select models)		•••		
FRP smooth fiberglass sidewall exteriors		••••		
One-piece seamless rubber roof material		••••		
Poly Flex™ one-piece covering for underbelly		•		
TuffShell™ vacuum-bond laminated roof and sidewalls		••••		
Unitized 1/2" laminated floor construction		•••		
Welded tubular aluminum sidewall and roof framework		••••		
Weld-free modular HSLA steel frame w/ E-Coat™ protection		••		

Standard Exterior Equipment

	LGT	EXP	EX-PORT	SPORT
110V G.F.C.I. protected exterior receptacle				••••
13" radial tires				•
13" C-range tires				••
14" radial tires				•
2" hitch coupler				••
2 5/16" hitch coupler (select models)				••
ABS fender skirt				••••

	LGT	EXP	EX-PORT	SPORT
Aerodynamic front profile				••••
Amber patio lights w/inside switch				••••
Baggage doors, lockable, insulated and radius-cornered with heavy-duty grab handles				••••
Carefree patio awning				•
Composite bumper extensions				•
DuraTek™ water-repellent sectionalized vinyl tent				••
E-Z Lube® axles				••••
Fiberglass, radius-cornered entrance door and screen door				••••
Front window with flush-mounted stone guard (select models)				••
HDPE wheel wells				••••
Heavy-duty grab handle for entry assistance				•
Heavy-duty retractable entrance step				••••
MaxiStor™ (select models)				••
Molded ABS bumper cover				•
Molded rain gutting with drip spouts				••••
Painted bottom radius skirting				•
Pass-through storage compartment				•••
Prep for outside grill				•••
Self-supporting lockable end-bunks (no poles required)				••
Sewer hose storage compartment				••••
Stabilizer jacks (2 pair) with sand pads				•
TorFlex® independent torsion-axle rubber ride suspension system				••••
White-spoked wheels				••••

Standard Heat, Power and Water Equipment

	LGT	EXP	EX-PORT	SPORT
6 gal. gas water heater				••
12V demand water pump				••••
12V electrical system with deluxe 110V 45-amp power converter				••••
18,000-BTU furnace with auto-ignition				•
20 lb. propane gas bottle				•
30 amp power cord				••••
A/C Chill grill				•
Auto-ignition furnace with wall thermostat				••••
Double 20 lb. propane gas bottles				•
Double 30 lb. propane gas bottles with auto regulator				•
Gravity fill for water				••••
Hookup for city water				••••
Outside shower				•
Rotocast fresh water holding tanks				••••
Single 30 lb. propane gas bottles, with regulator				•
Systems monitor panel				••••
Water heater bypass system				••••
Winterization kit				••••

Standard Interior Equipment

	LGT	EXP	EX-PORT	SPORT
13,500-BTU A/C				•
20" LCD TV in Living area				••
AM/FM/CD stereo with 2 speakers				•
Cable TV hookup with RG6 coax				••••
Crank-up antenna with signal booster				••••
Manchester Oak raised-paneled doors and drawers throughout				••••
Manchester Oak doors and drawers				••••
Mini-blinds throughout				•

	LGT	EXP	EX-PORT	SPORT
Overhead cabinetry is slanted (select models)				••••
Pleated night shades				••••
Residential furniture, designed and made by Jayco®				••••
Swivel rockers (2) (29D & 31V)				•
Vinyl flooring				••••

Standard Kitchen Equipment

	LGT	EXP	EX-PORT	SPORT
3 burner range with 9000-BTU SuperBurner™ and piezo igniter				••••
5 cu. ft. flush-mount refrigerator				••
6 cu. ft. flush-mount refrigerator				••
Cover for sink/cutting board (1)				••••
Dream Dinette™ mechanism, raises and lowers dinette table top				•
High-rise mixing faucet				••••
Manchester Oak raised-panel refrigerator fronts				•
Microwave oven with carousel				••
Oversized drawer in U-dinette (select models)				•
Oversized drawers (2) in booth dinette				•
Oversized oven				••••
Range hood with light and exhaust fan				••••
Removable countertop extension				•
Wallpaper border				••
White, residential-style, double-bowl kitchen sink w/ cover				••

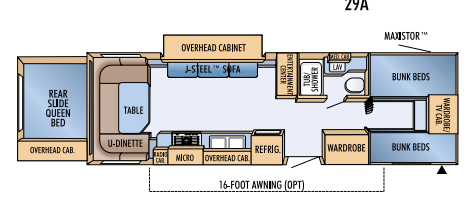
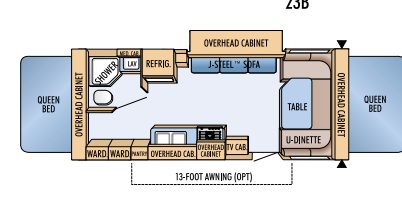
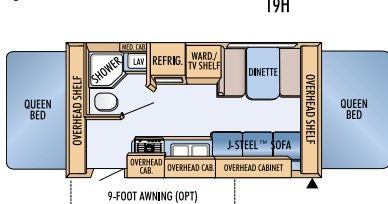
Standard Safety Equipment

	LGT	EXP	EX-PORT	SPORT
Breakaway switch				••••
Carbon monoxide alarm				••••
Clear safety glass windows				•
Dual hitch safety chains				••••
Fire extinguisher				••••
Lock and dead bolt on entrance door				••••
Multiple egress windows				••••
Propane alarm				••••
Smoke alarm				••••
Tinted safety glass windows				••••

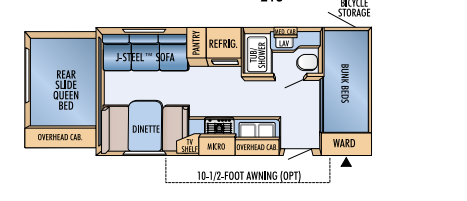
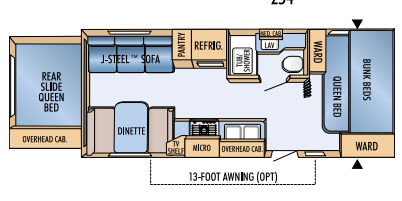
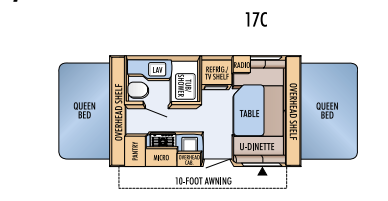
Optional Equipment

	LGT	EXP	EX-PORT	SPORT
12V heat pad for holding tanks				•
Bedroom carpet				•
CSA standards				••••
Customer value package				••••
Customer Value Package with 15,000 BTU A/C				••
Exterior entertainment center				•
Exterior storage drawer				•
Free standing table w/ 4 chairs				•
Heated bed mats				•
Hide-a-bed				•
Hydraulic surge brakes				••
Oven				•
Portable, outside gas grill				••••
Queen bed w/ bunk (199 & 218)				•
Spare tire w/ carrier				•
Suspension lift kit (2") (select models)				•
Trundle bed ILO sofa				•
Water purification system				••••

Jay Feather EXP



Jay Feather EX-PORT



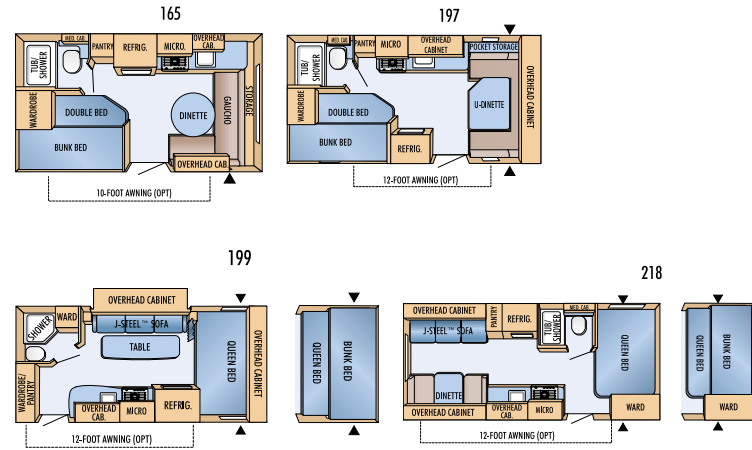
Jay Feather Floorplans

Customer Value Package

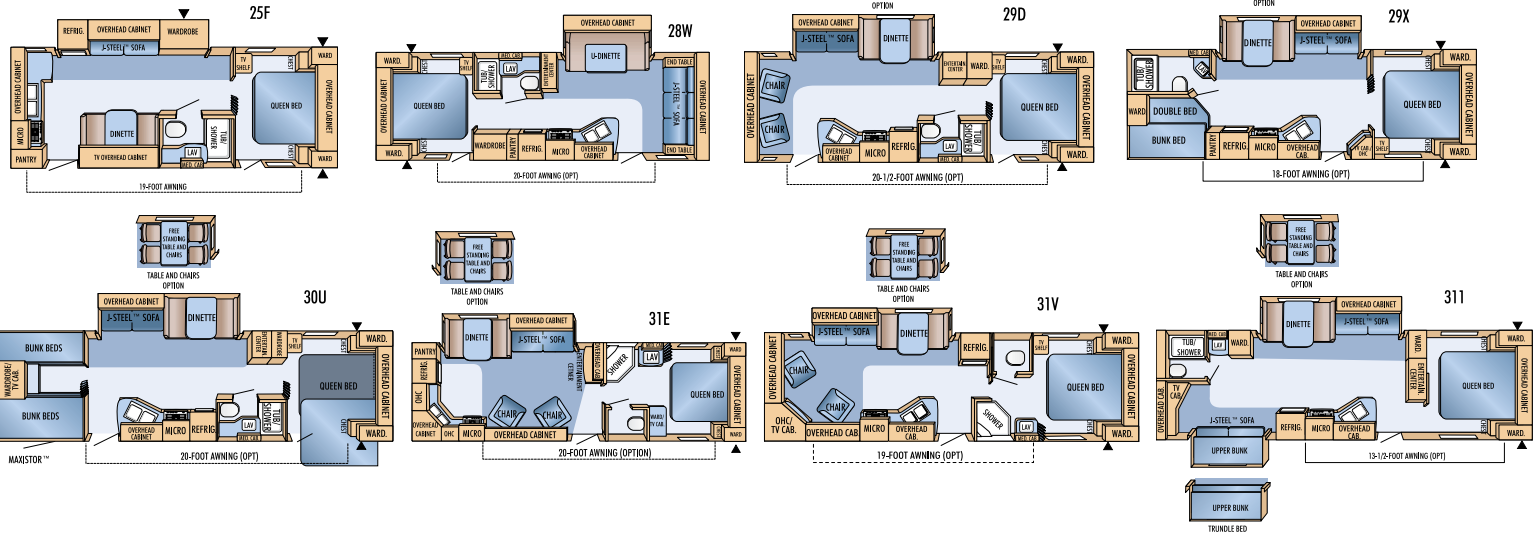
- 13,500-BTU A/C
- 6 gal. gas/electric DSI auto-ignition water heater
- A/C central (13,500 or 15,000 BTU) with wall thermostat and louvered directional ceiling vents
- ABS gas bottle cover
- ABS tub surround
- AM/FM/CD stereo with 2 speakers
- 1 Bathroom power vent
- Bi-fold cover for range
- Carefree® patio awning
- Carefree® Travl'r 12 volt electric patio awning
- Chrome wheels
- Home theater system, Dolby® Digital 5.1 Surround Sound w/DVD
- Innerspring mattress
- Microwave oven with carousel
- Outside shower
- 2 Oversized oven
- Spare tire and tire carrier
- 2 Stabilizer jacks (2 pair) with sand pads



Jay Feather SPORT



Jay Feather LGT



Floorplans	Exterior Length	Exterior Campsite Length	Exterior Height (with A/C)	Interior Height	Unloaded Vehicle Weight (lbs.)	Dry Hitch Weight (lbs.)	Gross Vehicle Weight Rating (lbs.)	Cargo Carrying Capacity (lbs.)	Fresh Water Capacity (gal) Includes Water Heater	Gray Wastewater Capacity (gal)	Toilet/Black Wastewater Capacity (gal)
LGT	25 F	27' 9"	—	125"	78"	5,305	595	6,850	1,545	36.5	22.5
	28 W	32' 5"	—	125"	78"	5,805	995	7,350	1,545	36.5	22.5
	29 D	31' 1"	—	125"	78"	5,815	935	7,350	1,535	36.5	22.5
	29 X	31' 1"	—	125"	78"	5,650	820	7,350	1,700	36.5	22.5
	30 U	33' 4"	—	125"	78"	6,100	965	7,500	1,400	36.5	22.5
	31 I	32' 11"	—	125"	78"	6,430	775	7,850	1,420	36.5	22.5
	31 E	33' 1"	—	124"	78"	6,010	720	7,500	1,490	36.5	22.5
	31 V	33' 4"	—	125"	78"	5,850	840	7,350	1,500	36.5	22.5
EXP	19H	20' 2"	23' 6"	116"	78"	3,565	435	4,750	1,185	30.5	22.5
	213	23' 7"	23' 9"	121"	78"	4,250	495	5,500	1,250	30.5	30.5
	23B	24'	27' 3"	114"	78"	4,060	400	4,950	890	30.5	29.5
	254	26' 9"	27' 3"	117"	78"	4,520	535	5,900	1,380	30.5	23.0
	29A	30' 11"	31' 9"	116"	78"	5,345	640	6,500	1,155	30.5	22.5
EX-PORT	17C	17' 9"	—	115"	78"	2,920	465	3,500	580	30.5	22.5
SPORT	165	18'	—	114"	78"	2,875	435	3,750	875	30.0	11.0
	197	20'	—	117"	78"	3,265	295	4,200	935	30.0	11.0
	199	20' 7"	—	117"	78"	3,765	375	4,750	985	30.0	11.0
	218	22' 7"	—	116"	78"	3,490	405	4,500	1,010	30.0	11.0

It is important for your safety and enjoyment that your tow vehicle be adequately sized and equipped to tow and handle the GVWR of the RV you select. Review weights and rating of your tow vehicle and consult a competent advisor for questions or advice. Whether you are new to RVing or a veteran, get a feel for the performance of your tow vehicle and the RV together before heading out on the roadways. When you tow an RV, you must drive differently than you do when driving a single vehicle. Practice hooking up, driving, backing up and braking in a safe environment or seek out professional instruction. Jayco affixes a weight label to each RV which lists weight information for that vehicle. See specification chart above.

Unloaded Vehicle Weight (UWV): Sometimes referred to as "Dry Weight," UWV means the typical weight of this trailer as built at the factory. The UWV, as used in product literature and other promotional materials, does not include cargo, fresh water, propane, options or dealer-installed accessories.

Gross Vehicle Weight Rating (GVWR): GVWR means the maximum permissible weight of the trailer, including the UWV plus passengers, personal items, all cargo, fluids, options and dealer-installed accessories. The GVWR is equal to or greater than the sum of the UWV and the CCC.

Cargo Carrying Capacity (CCC): CCC means the maximum weight of all passengers, personal items, food, fresh water, propane, tools, other cargo and dealer-installed accessories that can be carried by the trailer. CCC is equal to less than GVWR minus UWV. The addition of options will decrease the CCC.

Hitch Weight (HW): The hitch weight, as used in product literature and other promotional materials, does not include cargo, fresh water, propane gas, options or dealer-installed accessories. The addition of these types of items will either add to or subtract from the stated hitch weight.

Customer First Roadside Assistance

Travel worry-free in your Jay Feather with Jayco's Customer First Roadside Assistance program, yours at no cost during your first year of ownership. This program is offered through Coach-Net®, the largest RV emergency road service in the country, and gives you immediate access to dependable roadside assistance and support services with a simple phone call.



- Free jump starts
- Free tire changes
- Free fuel delivery
- Free lockout service
- Free traveler's checks
- Free 24-hour toll-free emergency message service
- Toll-free nationwide service appointment assistance
- Free custom trip routing and full color map service
- Free dispatch of on-site mechanical service
- \$1,000 auto theft or hit-and-run reward
- \$2,000 trip interruption reimbursement

We Back What We Build.

The Jayco Co-Pilot Warranty is a manufacturer's limited warranty. It comes from the people who build Jayco recreation vehicles to the people who buy them. Each Jayco is warranted to the original purchaser for twenty-four (24) months or twenty-four thousand (24,000) miles (mileage limitation applies to motorized products only), whichever occurs first, from the original date of purchase against defects in materials and workmanship. Jayco's limited warranty is not transferable. Go ahead and compare the Jayco warranty with other manufacturers' warranties. You'll find it's the best in the business!

For a copy of the limited warranty with full terms and conditions, ask your local Jayco dealer.



Your Jayco Dealer

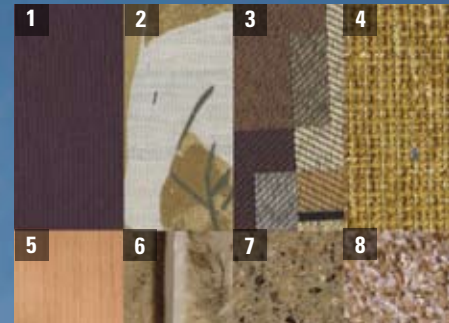
JayPlus

Protect your RV investment. Ask your Jayco dealer about our exclusive JayPlus program today.



As a Jayco owner, you can be part of the Jayco Jafari International Travel Club. Ask your dealer about the Jafari "flight" in your area, write Jayco or visit our website.

Interior Colors



Toffee



Pear

1. Main 2. Coordinate 3. Bedspread 4. Drapery
5. Wood 6. Vinyl Floor 7. Countertop 8. Carpet



AMERICA'S MOST **LIVEABLE** RVs.

Jayco, Inc., P.O. Box 460, Middlebury, IN 46540 www.jayco.com

See dealer for further information and prices. All information in this brochure is the latest available at the time of publication approval. Jayco reserves the right to make changes and to discontinue models without notice or obligation. Photos in this brochure may show optional equipment or props used for photography purposes. RVs built for sale in Canada may differ to conform to Canadian codes. E-Z Lube is a registered trademark of the Dexter Axle Company. Carefree is a registered trademark of Carefree of Colorado. Dolby and the double-D symbol are registered trademarks of Dolby Laboratories.

©2008 Jayco, Inc. 08-JFTR-PL 0108-50K Printed in U.S.A. RVIA