

EAGLE PREMIER



exclusive **COMFORT** made affordable



Read more about our industry-leading **2-YEAR WARRANTY** on the back cover!



Jayco

Generations of family fun.

the premier **EXPERIENCE**

Comfort should never go out of style, which is why the 2014 Jayco Eagle Premier is anything but ordinary. Solid-surface countertops, an 8 cu. ft. residential-style refrigerator, a Whisper Quiet air conditioner* and stunning graphics set Eagle Premier apart from anything in its price range. We call it premier for a reason.

* Customer Value Package feature



FRONT CAP WITH LED LIGHTS

STOR-GALORE PASS-THRU STORAGE WITH SLAM LATCH BAGGAGE DOORS



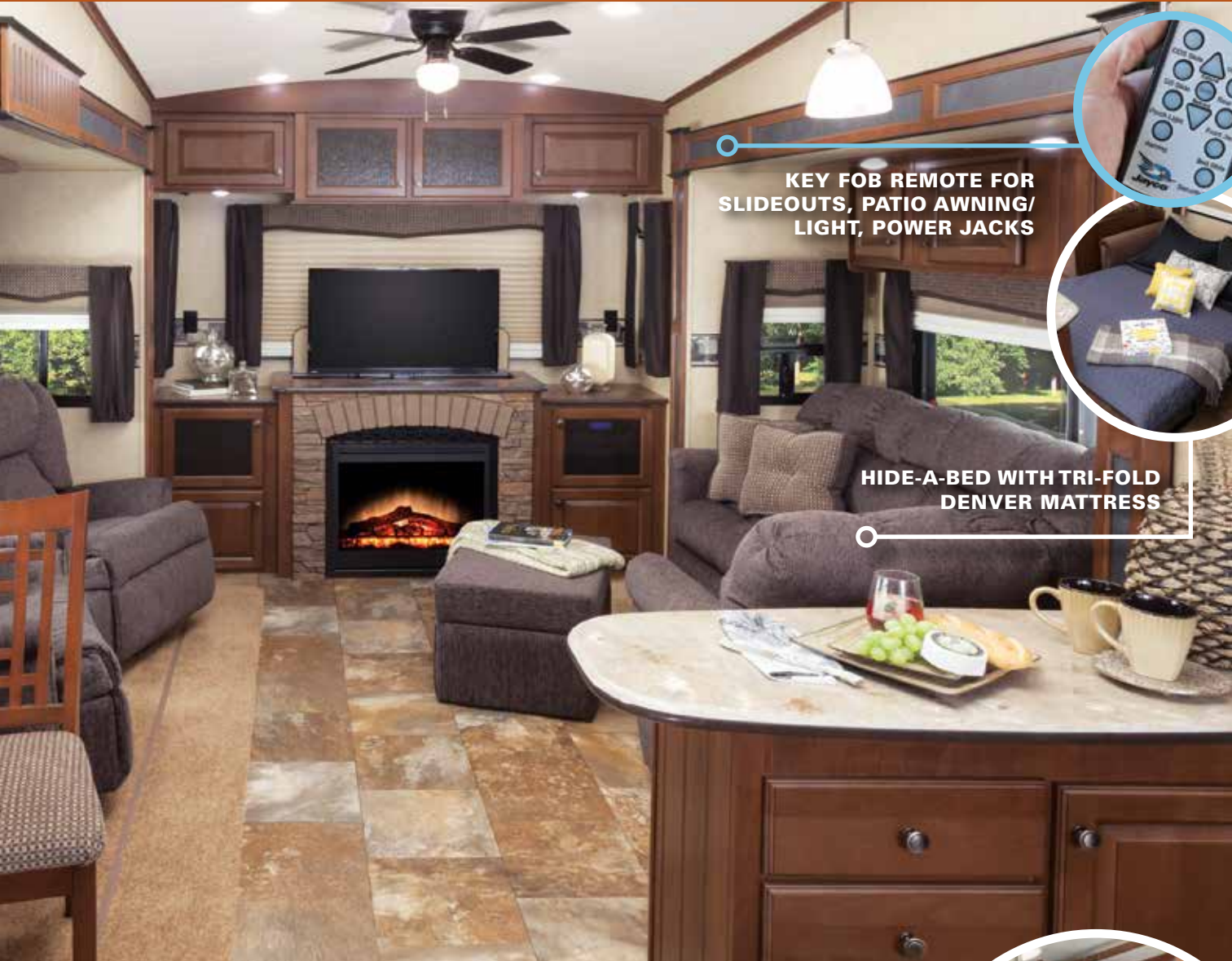
FRAMELESS WINDOWS



EAGLE PREMIER 361REQS | PEWTER



EAGLE PREMIER 361REQS | PEWTER



KEY FOB REMOTE FOR SLIDEOUTS, PATIO AWNING/LIGHT, POWER JACKS



HIDE-A-BED WITH TRI-FOLD DENVER MATTRESS



WALK-IN CLOSET



FLOOR-TO-CEILING BEDROOM DRESSER WITH 32" LED TV

DENVER MATTRESS

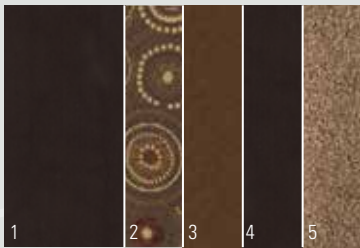


the ultimate **FAMILY PACKAGE**

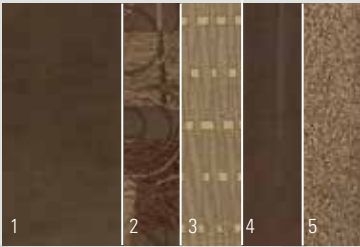
Designed by our family — for your family — Eagle Premier boasts a roomy master suite, tri-fold Denver Mattress hide-a-bed sofa and family-friendly bunk rooms to maximize sleeping capacity.

INTERIOR DÉCOR CHOICES

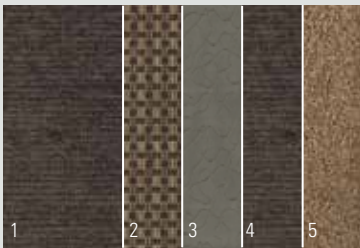
CHESTNUT



BROWNSTONE



PEWTER



- 1 Sofa
- 2 Accent
- 3 Bedroom
- 4 Chair
- 5 Carpet



**BUNK ROOM WITH
ADJOINING BATHROOM**



**SOLID-SURFACE COUNTERTOPS
AND PULL-OUT SPRAYER**





EAGLE PREMIER 361REQS | CHESTNUT



EAGLE PREMIER 375BHFS | BROWNSTONE



EAGLE PREMIER 375BHFS | BROWNSTONE

4-SEASON ENGINEERING

Extend your camping season with the Jayco Climate Shield — the ultimate in weather protection. Designed for efficient heating and cooling, Climate Shield protects against extreme heat and extreme freezing — even when temperatures hit a high of 100° F or a low of 0° F.

VALUE UNIT AREA	TYPE OF INSULATION
R-7 All vertical walls	Block foam
R-11 Behind front cap	R-11 insulation
R-30 Roof	R-18 insulation + R-14 foil
R-22 Main floor	R-7 insulation + R-14 foil
R-14 Slide floor	R-14 foil
R-22 Bedroom floor	R-7 insulation + R-14 foil
R-14 Inside open pin box	R-14 foil
R-14 Enclosed drop-frame overhang	R-14 foil



WALL CONSTRUCTION

- Vacuum-bonded layers
- Smooth fiberglass exterior
- Welded aluminum frames with metal backers
- Eurostyle front cap with LED lights
- Extra thick front cap fiberglass insulation

FLOOR CONSTRUCTION

- 5/8" tongue-and-groove plywood deck on 2" x 3" wooden floor joists
- Reflective foil insulation
- Poly Flex covering and an enclosed, heated underbelly
- Bedroom floor Flexfoil and fiberglass insulation

ROOF CONSTRUCTION

- 3/8" plywood decking, screwed down at every seam
- 5" arched, stamped steel roof trusses
- R-30 insulation package
- Seamless weather barrier

* Eagle Premier was tested in 0° F and 100° F weather over an extended period of time in a controlled environment and all functions of the coach were fully operational. Testing cannot account for natural elements, such as wind or moisture. In actual use, unit may not perform as well. In addition, outside components are subject to freezing and require steps to properly insulate. Jayco's warranty does not cover damage caused by freezing.

STANDARDS AND OPTIONS

STANDARD EXTERIOR EQUIPMENT

TuffShell vacuum-bonded laminated walls
Ultra high-gloss, gel-coat exterior
Aerodynamic front cap with LED lighting
One-piece seamless roof covering
Stamped steel Magnum Truss Roof System
10" I-Class cambered structural I-beam frame
Climate Shield insulation package (see package details)
Completely enclosed and protected slideout mechanisms
Frameless dark-tinted, safety-glass windows
30" x 72" entry door with oversized window
4-step entrance step
Front awning arm convenience outlet
16" radial tires
Nev-R-Adjust brakes
E-Z Lube axles
MOR/ryde CRE 3000 suspension system
Wide-stance front landing gear
Exterior kitchen with 32" LED TV, sink, refrigerator and microwave (375BHFS)
Enclosed, protected basement drop frame
Stor-Galore pass-through basement storage with slam latches and strut assist
Cable TV and outlet in basement
Exterior marine-grade speakers (2)
Sliding propane tray with 30-lb. bottles
Dual battery compartment with disconnect
Heated, enclosed Uni-Dock utility center
50-amp power service with detachable cord
35,000-BTU furnace (minimum)
75-gal. fresh water tank
85-gal. gray tank capacity (minimum)
50-gal. black tank capacity (minimum)
Cable/satellite prep
Digital TV antenna
Electric rear stabilizer jacks
Undermounted spare tire
Outside grill prep
Frame prepped for bike rack/cargo tray
Roof ladder

STANDARD INTERIOR EQUIPMENT

Lumbercore, screwed stile cabinetry with hidden hinges
Hardwood slideout fascias
Steel ball bearing drawer guides,
75-lb. capacity, full extension
Large, split, undermounted Stonecast kitchen sink with covers
Pull-out kitchen faucet
LG brand, high-gloss, solid-surface kitchen countertops
Water heater bypass
8 cu. ft. refrigerator with high-gloss front
Oversized 21" oven with 3-burner cooktop and range cover
Diamondflor deluxe linoleum flooring
Toe-kick kitchen lighting
Free-standing table and 4 chairs (opt. 375BHFS)
90-amp power center with Charge Wizard
Backlit Command Center for switches with 12V cell phone charger
Floor-level convenience light switch for safe entry
Key fob remote for slideouts, patio awning, power jacks (n/a with levelers) and patio light
Ceiling fan
LED ceiling lights throughout
Kitchen ceiling feature (where available)
Closeable and directional A/C vents
Prep for 2nd ducted A/C
40" LCD HDTV

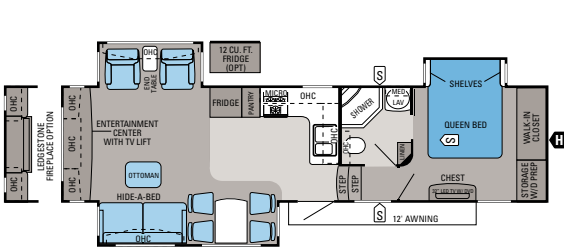
Recliner rockers (n/a 371FLFS)
Hide-a-bed sofa with tri-fold Denver Mattress (n/a 371FLFS, equipped with air mattress)
Pleated day/night shades (main living area)
6' 5" tall living area slideouts
Neo-angle ABS shower with glass enclosure
One-piece fiberglass shower with glass doors (select models)
Porcelain bath stool with foot flush
Robe hooks in bath
Deluxe bedding package
Full-trunk, under-bed storage
Walk-in style front closet with dual hanging rods
Washer/dryer prep
Washer dryer cabinet prepped for stackable
Floor-to-ceiling bedroom dresser with 32" LED TV/DVD player and opera-style window (n/a 371FLFS)

CUSTOMER VALUE PACKAGE (MANDATORY)

Aluminum rims
Extendable main entrance grab handle
Large patio scare lights (2)
Electric patio awning with LED lighting
30" over-the-range residential microwave
10 gal./hr. quick recovery gas/electric DSI water heater
Canister style, in-line water purifier
15,000-BTU low-profile Whisper Quiet air conditioner
Arched interior ceiling
Multi-Media Premium Sound System
AM/FM/CD/DVD/MP3 player with toggle switch for outside speakers
Bath power vent
Bath skylight
Denver Mattress Advanced queen-sized (60" x 80") pillowtop mattress
Under-bed floor safe

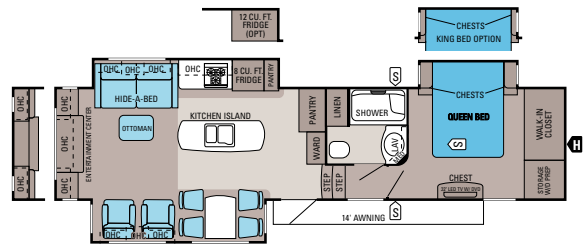
OPTIONS

Customer Value Package with heat pump
Slideout awnings
2nd electric power patio awning, mounted on slideout (n/a 375BHFS and 371FLFS)
Ivory-colored sidewalls (mandatory)
Keyless entry at main entrance
Thermal-paned, tinted, safety-glass windows
4-point auto leveling jacks
MOR/ryde pin box
Generator prep
5,500-watt gasoline generator (includes prep)
Power cord reel (manual)
Bike rack/cargo tray system
Outside grill
12 cu. ft. refrigerator
30" residential-grade convection microwave with oven
Kitchen power vent
Ledgestone fireplace (321RLTS, 331RETS, 351RLTS, 361REQS) (standard on 371FLFS)
Fireplace (n/a 371FLFS)
Free-standing table and 4 chairs (375BHFS)
Living area linoleum (n/a 371FLFS, 375BHFS)
King-sized mattress (n/a 321RLTS, 375BHFS)
2nd 13,500-BTU low-profile, ducted A/C
Dyson cordless vacuum
Bunk beds with trundle bed on off-doorside (375BHFS)
Bunk bed with hide-a-bed on off-doorside (375BHFS)



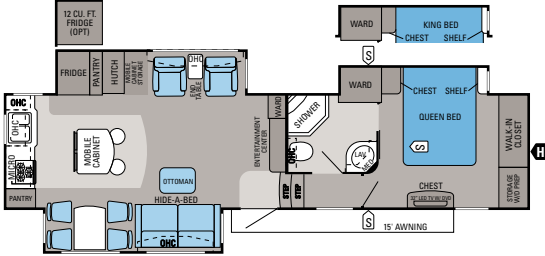
EAGLE PREMIER | 321RLTS

Ext. Length: 35' 11" Ext. Height: 158" Unloaded Weight (lbs.): 10,525 Sleeps: 4-6



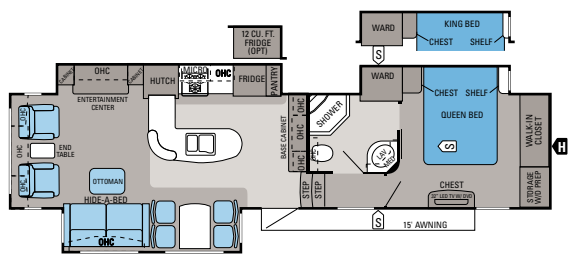
EAGLE PREMIER | 331RETS

Ext. Length: 37' 10" Ext. Height: 158" Unloaded Wt. (lbs.): 11,600 Sleeps: 3-4



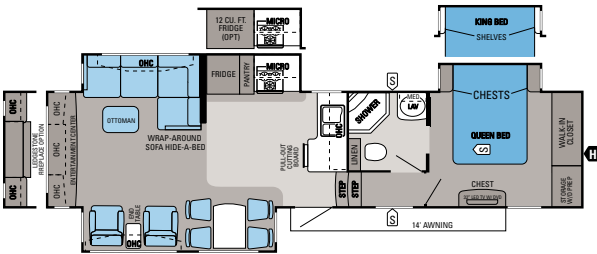
EAGLE PREMIER | 343RKTS

Ext. Length: 38' 11" Ext. Height: 151" Unloaded Wt. (lbs.): 11,600 Sleeps: 4-6



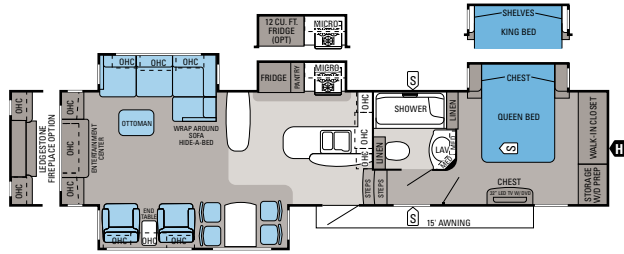
EAGLE PREMIER | 351MKTS

Ext. Length: 40' 5" Ext. Height: 151" Unloaded Wt. (lbs.): 11,575 Sleeps: 4



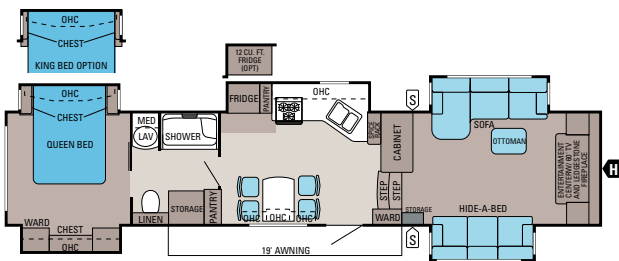
EAGLE PREMIER | 351RLTS

Ext. Length: 39' 2" Ext. Height: 159" Unloaded Wt. (lbs.): 11,225 Sleeps: 4



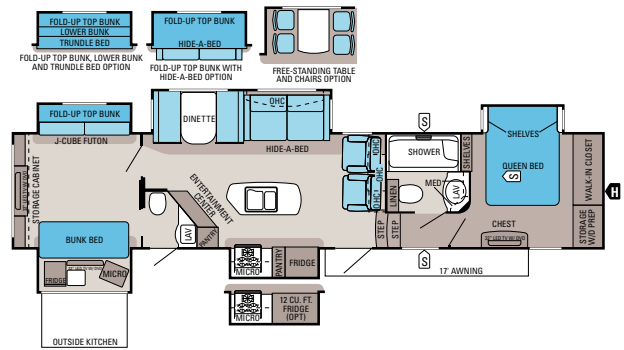
EAGLE PREMIER | 361REQS

Ext. Length: 40' 9" Ext. Height: 156" Unloaded Weight (lbs.): 11,755 Sleeps: 4-6



EAGLE PREMIER | 371FLFS

Ext. Length: 43' 9" Ext. Height: 159" Unloaded Wt. (lbs.): 12,133 Sleeps: 4-5



EAGLE PREMIER | 375BHFS

Ext. Length: 43' 5" Ext. Height: 159" Unloaded Wt. (lbs.): 12,725 Sleeps: 8-11

SPECIFICATIONS

FLOORPLAN	EXT. LENGTH	EXT. WIDTH	EXT. HEIGHT (WITH A/C)	EXT. HEIGHT (WITH OPT. BEDROOM A/C)	INT. HEIGHT	UNLOADED VEHICLE WEIGHT (LBS.)	DRY HITCH WEIGHT (LBS.)	GROSS VEHICLE WEIGHT RATING (LBS.)	CARGO CARRYING CAPACITY (LBS.)	FRESH WATER CAPACITY (GAL) (WITH WATER HEATER)	GRAY WASTEWATER CAPACITY (GAL)	TOILET/BLACK WASTEWATER CAPACITY (GAL.)
321RLTS	35' 11"	96"	158"	158"	80"	10,525	2,345	14,500	3,975	85	87	50
331RETS	37' 10"	96"	158"	158"	81"	11,000	2,265	14,900	3,900	85	87	50
343RKTS	38' 11"	96"	151"	159"	77"	11,600	2,335	14,995	3,395	85	87	50
351MKTS	40' 5"	96"	151"	159"	77"	11,575	2,370	14,995	3,420	85	87	50
351RLTS	39' 2"	96"	159"	159"	80"	11,225	2,305	14,995	3,770	85	85	50
361REQS	40' 9"	96"	156"	156"	80"	11,755	2,565	14,995	3,240	85	85	50
371FLFS	43' 9"	96"	159"	159"	81"	12,133	2,625	15,975	3,842	85	70	44
375BHFS	43' 5"	96"	159"	159"	80"	12,725	2,500	15,975	3,250	85	93	94

The weights of certain options and/or option packages are not included in the UJVW listed in the specification charts.

Unloaded Vehicle Weight (UVW): Sometimes referred to as "Dry Weight," UVW means the typical weight of this trailer as built at the factory. The UVW, as used in product literature and other promotional materials, does not include cargo, fresh water, propane, options or dealer-installed accessories.

Gross Vehicle Weight Rating (GVWR): GVWR means the maximum permissible weight of the trailer, including the UVW plus passengers, personal items, all cargo, fluids, options, and dealer-installed accessories. The GVWR is equal to or greater than the sum of the UVW and the CCC.

Cargo Carrying Capacity (CCC): CCC means the maximum weight of all passengers, personal items, food, fresh water, propane, tools, other cargo and dealer-installed accessories that can be carried by the trailer. CCC is equal to or less than GVWR minus UVW. The addition of options will decrease the CCC.

Hitch Weight (HW): The hitch weight, as used in product literature and other promotional materials, does not include cargo, fresh water, propane gas, options or dealer-installed accessories. The addition of these types of items will either add to or subtract from the stated hitch weight.

It is important for your safety and enjoyment that your tow vehicle be adequately sized and equipped to tow and handle the GVWR of the RV you select. Review weights and rating of your tow vehicle and consult a competent advisor for questions or advice. Whether you are new to RVing or a veteran, get a feel for the performance of your tow vehicle before heading out on the roadways. When you tow an RV, you must drive differently than when you drive a single vehicle. Practice hooking up, driving, backing up and braking in a safe environment or seek out professional instruction. Jayco affixes a weight label to each RV which lists weight information for that vehicle. See specifications chart above.

2-YEAR WARRANTY*

Peace of mind comes standard



BUMPER
to
PIN BOX
LIMITED WARRANTY*

Nobody offers a better warranty than Jayco. With our exclusive 2-year Co-Pilot Limited Warranty, the only strings we attach are those that deliver the ultimate in reliability. At Jayco, your peace of mind is our priority, and that's the Jayco difference.

*For a copy of our 2-year limited warranty with full terms and conditions, please contact your local Jayco dealer or visit Jayco.com.

300 JAYCO DEALERS

A four-decade strong network

From the sales experience to service after the sale, we consider our dealers to be an important part of the Jayco family. Establishing a solid relationship with your local Jayco dealer is a key component in the enjoyment of your new Jayco. By purchasing from a local dealer, you will have a convenient location for sales, parts and service support. We hope you consider them a part of your camping family.

Your local dealer

1-YEAR FREE

Roadside Assistance

Travel worry-free with Jayco's Customer First Roadside Assistance program, yours at no cost during your first year of ownership. This program is offered through Coach-Net, the country's largest RV emergency road service, and gives you immediate access to assistance.

Coach-Net
RV Technical & Roadside Assistance



Generations of family fun.

THE JAYCO STORY BEGAN IN 1968 WITH OUR FAMILY—THE BONTRAGERS. Lloyd Bontrager created an innovative, easy-to-use lifter system that led to a better fold-down camper. Loaded with more conveniences, he believed his camper would bring families closer together.

Since then, Jayco has helped generation after generation create family stories — good, old-fashioned family fun built around campfires with a Jayco RV nearby. At Jayco, we strive to build family-friendly products that will outlast just about everything but your memories. We'd love nothing more than to be a part of your family story. Join us in our generations of family fun.

eco advantage™

Jayco's long-term commitment to protecting the environment



Scan this QR code with your smartphone to watch a video about our efforts and the impact we're making on our planet.
jayco.com/ecoadvantage

Follow us on



Jayco, Inc., P.O. Box 460, Middlebury, IN 46540, www.jayco.com 

See dealer for further information and prices. All information in this brochure is the latest available at the time of publication approval. Jayco reserves the right to make changes and to discontinue models without notice or obligation. Photos in this brochure may show optional equipment and props for photography purposes. RVs built for sale in Canada may differ to conform to Canadian codes. ©2013 Jayco, Inc. 14-EGPR-PL 1013-25K Printed in U.S.A.