



# 2015 REDHAWK

CLASS C MOTORHOMES BY JAYCO



# REDHAWK

SIMPLY MORE FUN



# 2

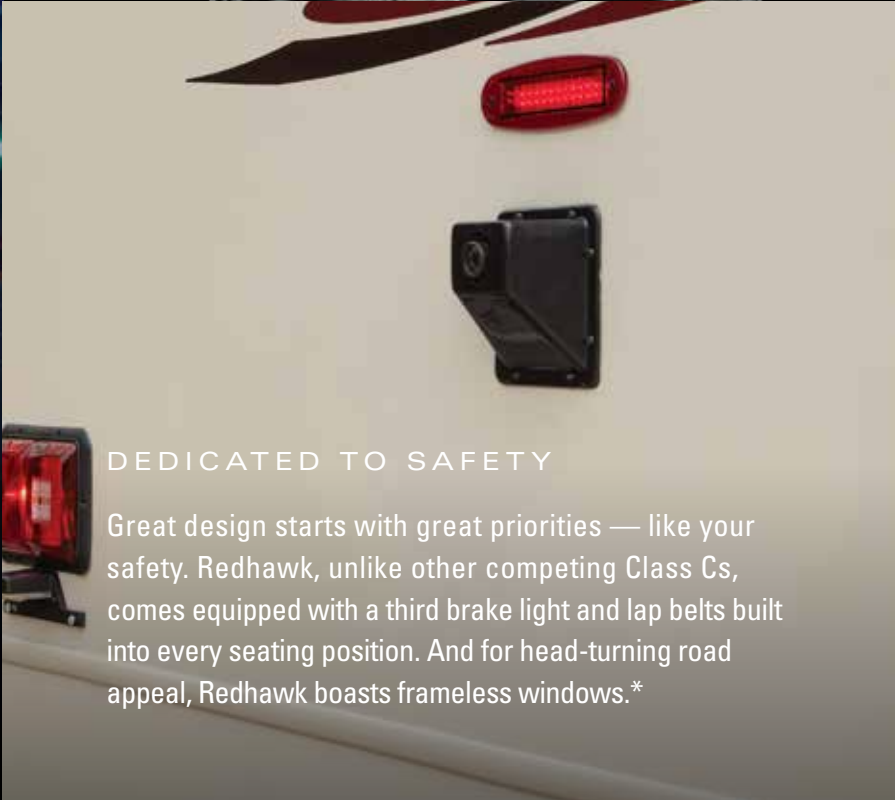
YEAR WARRANTY

Read more about the only Class C **2-YEAR WARRANTY** on the back cover!

## STEP UP TO FUN

At Jayco, we know how to deliver fun in a Class C motorhome, starting with the journey and ending with the destination. Our 2015 Jayco Redhawk, our most affordable Class C, is no exception, packing more standard features than anything in its price range. For a smooth ride, Redhawk boasts a 305 HP Triton engine, Ford E-450 chassis and standard Hellwig helper springs. We pair frameless windows\* and comfortable interiors, raising your expectations of entry-level comfort.





DEDICATED TO SAFETY

Great design starts with great priorities — like your safety. Redhawk, unlike other competing Class Cs, comes equipped with a third brake light and lap belts built into every seating position. And for head-turning road appeal, Redhawk boasts frameless windows.\*

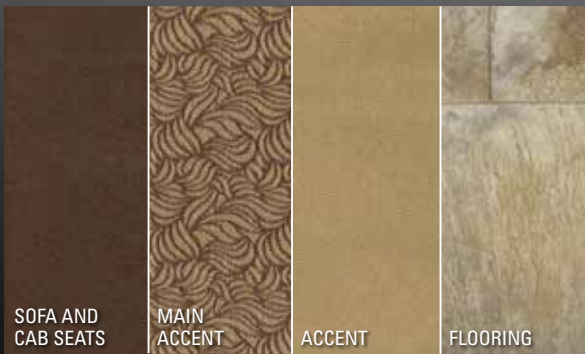
\* Customer Value Package



REDHAWK 29XK | TOFFEE

INTERIOR DÉCOR CHOICES

TOFFEE



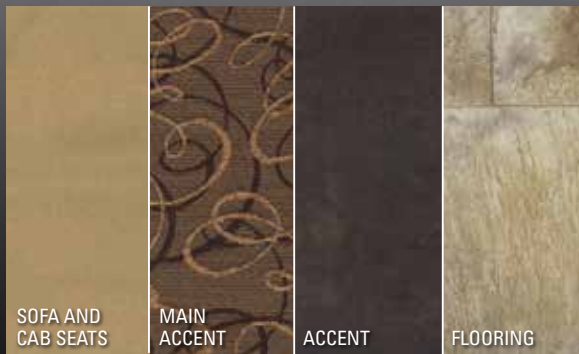
SOFA AND CAB SEATS

MAIN ACCENT

ACCENT

FLOORING

PRALINE



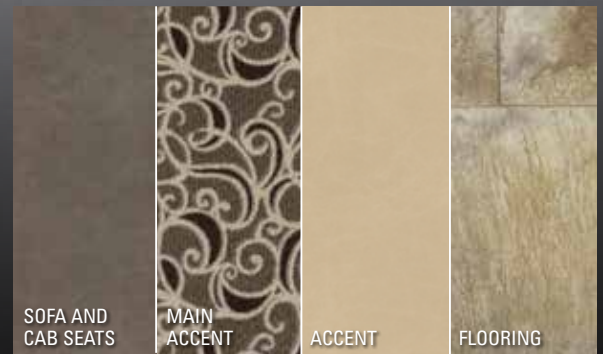
SOFA AND CAB SEATS

MAIN ACCENT

ACCENT

FLOORING

DOVE



SOFA AND CAB SEATS

MAIN ACCENT

ACCENT

FLOORING



High-end kitchens with a standard convection microwave oven (n/a 31XL)



Queen-sized bed with Denver Mattress and bedspread



31XL bunk beds for a maximum 9-person sleeping capacity



Cab-over-bunk with Customer Value Package 32" LED TV with power TV bracket

# JAYCO CONSTRUCTION

At Jayco, we've built a reputation for superior construction and craftsmanship. We always use top-quality materials and innovative manufacturing techniques — down to the smallest details. The result? Unmatched resale value and peace of mind in an RV that's built to handle whatever the road throws at it, while outlasting everything but your memories.



## eco advantage™

Scan this QR code with your smartphone to watch a video about our long-term commitment to protecting the environment.

### WALL CONSTRUCTION

- 1 Vacuum bonded:** Features laminated layers of fiberglass, lauan, aluminum framing, R-5 bead-foam insulation and vinyl paneling
- 2 Seamless fiberglass front cap (Customer Value Package):** Increases aerodynamics, while cap adds durability and leak protection where it's needed most
- 3 Frameless windows (Customer Value Package):** An industry-first feature, creates a stunning exterior

### FLOOR CONSTRUCTION

- 4 Vacuum bonded:** Features laminated layers of Darco underbelly, 1/8" lauan, a welded aluminum frame, R-9 bead-foam insulation and 5/8" Strukturwood
- 5 Welded aluminum frame:** Lighter and more corrosion-resistant than competing steel floors, this frame provides more cargo capacity
- 6 Strukturwood floors:** Features wood strips that are compressed and bonded with wax and resin adhesives; these high-mechanical properties make Strukturwood ideal for long-lasting durability

### ROOF CONSTRUCTION

- 7 Vacuum-bonded layers:** Features laminated layers of 5" arched aluminum trusses, moisture-resistant 1/4" plywood decking, R-15 bead-foam insulation and hard-board ceiling
- 8 Seamless one-piece rubber roof:** Features one-piece construction for better leak protection

### PERFORMANCE

- 9 Ford E-450 chassis and Triton 6.8L V-10 305 HP engine:** Features 22,000 lbs. GCWR with up to 5,000 lbs. of towing capacity
- 10 MOR/ryde frame:** Extends chassis for optimal weight distribution and features one-piece, laser-shear construction for a tight-fit design
- 11 Hellwig helper springs with rubber body mounts:** Work with existing springs to give the RV more support, improving sway control under heavy loads while dampening vibration throughout the unit

## STANDARDS & OPTIONS

### CUSTOMER VALUE PACKAGE

Champagne fiberglass sidewalls
Frameless windows
Front-molded seamless fiberglass cap
12V electric patio awning
400-watt inverter
Black holding tank sprayer
Rear back-up camera and monitor
Heated holding tanks, 12V pads
8 cu. ft. flush-mount, double-door refrigerator
32" digital LED HDTV
iPod input jack

### STANDARD EXTERIOR EQUIPMENT

TuffShell vacuum-bonded laminated roof, floor and sidewalls
Bead-foam insulation (R-15 max roof, R-9 max floor, R-5 max walls)
Aluminum running boards
Fiberglass, radius-cornered entrance door with screen door
Electric-powered entrance step
Pass-through storage compartment with light (select models)
Onan 4,000-watt MicroQuiet generator
42-lb. propane tank
120V G.F.C.I. protected exterior receptacle
12V electrical system with 120V, 60-amp power converter
30-amp power cord
Slideout battery tray
Illuminated battery disconnect switch
Outside shower
4" tube-bumper sewer hose storage
Roof ladder

### STANDARD INTERIOR EQUIPMENT

84" ceiling height
Honey Cherry cabinetry and doors with brushed-nickel cabinet hardware
Ball bearing drawer guides
3-burner range with 9,000-BTU SuperBurner and piezo igniter
Convection microwave oven
12V demand water pump
6 gal. gas/electric DSI auto-ignition water heater
Water filtration system
Dream Dinette mechanism, raises and lowers dinette tabletop (select models)
Lap safety belts on all living area seats
Vinyl flooring throughout unit
Interior command center

## FLOORPLANS

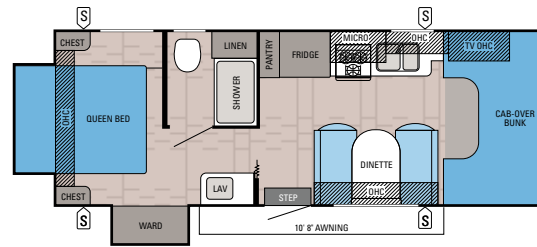
- \_\_\_\_\_ Cable TV hookup with RG-6 coax
- \_\_\_\_\_ Digital antenna with signal booster
- \_\_\_\_\_ 15,000-BTU ducted air conditioner
- \_\_\_\_\_ 31,000-BTU furnace with wall thermostat with auto ignition
- \_\_\_\_\_ ABS shower with one-piece, decorative, tile/stone-look surround
- \_\_\_\_\_ Removable clothing rod in shower
- \_\_\_\_\_ Skylight in shower
- \_\_\_\_\_ Marine toilet with foot pedal flush
- \_\_\_\_\_ Queen-sized bed with Denver Mattress and bedspread
- \_\_\_\_\_ Under-bed storage, bed lifts easily on gas struts (select models)
- \_\_\_\_\_ Large wardrobes
- \_\_\_\_\_ Full cab-over Denver Mattress bunk mat with headboard (750-lb. rating)
- \_\_\_\_\_ Denver Mattress bunk mats (300-lb. rating) (31XL)

### STANDARD DRIVING EQUIPMENT

- \_\_\_\_\_ Ford E-450 chassis
- \_\_\_\_\_ Triton 6.8L EFI V-10 305 HP engine with 420 lbs./ft. torque
- \_\_\_\_\_ 5-speed automatic TorqShift series transmission with overdrive
- \_\_\_\_\_ Hellwig helper springs with rubber isolation body mounts
- \_\_\_\_\_ 120-amp alternator
- \_\_\_\_\_ 5,000-lb. hitch with 7-pin plug
- \_\_\_\_\_ 55-gal. fuel tank
- \_\_\_\_\_ Driver and passenger air bags
- \_\_\_\_\_ Power anti-lock brakes with power steering
- \_\_\_\_\_ Tilt steering wheel
- \_\_\_\_\_ Auxiliary start switch
- \_\_\_\_\_ A/C and cruise control
- \_\_\_\_\_ Deluxe remote-controlled, side-view mirrors
- \_\_\_\_\_ Power windows and door locks
- \_\_\_\_\_ Third brake light

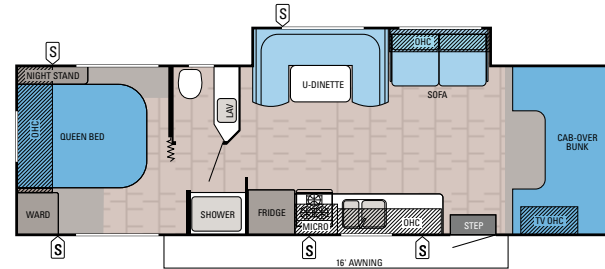
### OPTIONS

- \_\_\_\_\_ Hydraulic leveling jacks



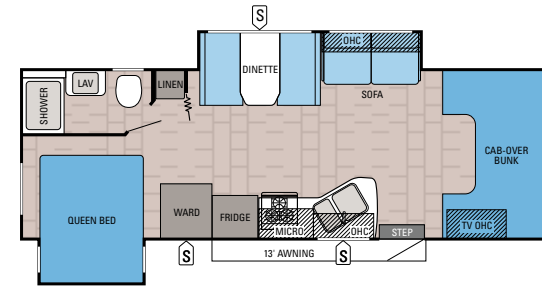
### REDHAWK | 23XM

Ext. Length: 26' 3" Exterior Height: 139" Sleeps: 6-7



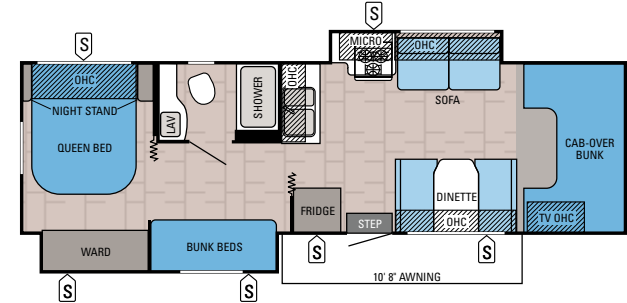
### REDHAWK | 29XK

Ext. Length: 32' Exterior Height: 137" Sleeps: 6-7



### REDHAWK | 26XD

Ext. Length: 28' 3" Exterior Height: 138" Sleeps: 6



### REDHAWK | 31XL

Ext. Length: 32' Exterior Height: 137" Sleeps: 7-9

**Gross Vehicle Weight Rating (GVWR):** The maximum permissible weight of the motorhome, including the Unloaded Vehicle Weight (UVW) plus passengers, personal items, all cargo, fluids, options and dealer-installed accessories. The GVWR is equal to or greater than the sum of the UVW and the Cargo Carrying Capacity.

**Gross Combined Weight Rating (GCWR):** The maximum allowable combined weight of the motorhome used as a tow vehicle and the attached towed vehicle.

It is important for your safety and enjoyment that you are aware of the weights and tow ratings of the RV you select. Consult a competent advisor for questions or advice. Whether you are new to RVing or a veteran, get a feel for the performance of your RV before heading out on the roadways. When you tow a vehicle with your RV, you must drive differently than when you drive a single vehicle. Practice hooking up, driving, backing up and braking in a safe environment or seek out professional instruction. Jayco affixes a weight label to each RV which lists weight information for that vehicle. Refer to that label to verify the vehicle will meet your requirements. See specifications chart below.

## SPECIFICATIONS

MODELS	DIMENSIONS				WEIGHTS (LBS.)		DRIVING FEATURES		FURNACE	TANKS (GALS.)			
	FLOORPLAN	EXTERIOR LENGTH	EXTERIOR WIDTH	EXT. HEIGHT (WITH A/C)	INTERIOR HEIGHT	GROSS VEHICLE WEIGHT RATING	GROSS COMBINED WEIGHT RATING	ENGINE/SIZE	WHEEL BASE	AUTO-IGNITION (BTUS)	FRESH (INCLUDES WATER HEATER)	GRAY	BLACK
23XM		26' 3"	100"	139"	84"	14,500	22,000	6.8L TRITON EFI V-10	181"	31M	38	40	32
26XD		28' 3"	100"	138"	84"	14,500	22,000	6.8L TRITON EFI V-10	181"	31M	38	40	32
29XK		32'	100"	137"	84"	14,500	22,000	6.8L TRITON EFI V-10	223"	31M	38	40	32
31XL		32'	100"	137"	84"	14,500	22,000	6.8L TRITON EFI V-10	223"	31M	38	40	32

NOBODY OFFERS A BETTER WARRANTY

**2**  
**YEAR**  
WARRANTY



**Your quality time**  
starts with peace of mind.

For 45 years, Jayco has helped generation after generation create family memories—good, old-fashioned family fun built around a campfire with a Jayco RV nearby. In all of that time, we learned something important—quality time starts with peace of mind, which is why Jayco offers the only 2-year limited warranty in Class C motorhomes.\*

**Nobody offers a better warranty than Jayco.**

\*For a copy of our limited warranty with full terms and conditions, please contact your Jayco dealer.



**Generations of family fun.**

YOUR LOCAL DEALER

## 300 JAYCO DEALERS

The fun starts with your local dealer

From the sales experience to service after the sale, we consider our dealers to be an important part of the Jayco family. Establishing a solid relationship with your local Jayco dealer is a key component in the enjoyment of your new Jayco. By purchasing from a local dealer, you will have a convenient location for sales, parts and service support. We hope you consider them a part of your camping family.

## 5-YEARS FREE Roadside Assistance

Travel worry-free with Ford's Roadside Assistance program, yours at no cost during the first five years of ownership. This program is offered through Coach-Net, the country's largest RV emergency road service, and gives you immediate access to assistance.

**Jayco, Inc., P.O. Box 460, Middlebury, IN 46540**

See dealer for further information and prices. All information in this brochure is the latest available at the time of publication approval. Jayco reserves the right to make changes and to discontinue models without notice or obligation. Photos in this brochure may show optional equipment and props for photography purposes. RVs built for sale in Canada may differ to conform to Canadian codes. ©2014 Jayco, Inc. 15-RDHK-PL 1214-10K Printed in U.S.A.



[www.jayco.com](http://www.jayco.com)