



SEISMIC™ *SEISMIC*™ *Octane*™ *Octane*™
WAVE

2016



BLAZE NEW TRAILS
#LETSJAYCO



2
YEAR
WARRANTY



#LETSJAYCO

When you travel with Jayco, fun is the only thing on the agenda. That's because we go the extra mile so you can live in the moment. From comfortable, amenity-packed floorplans to weather-shielding insulation and superior frame construction, you'll have everything you need to adventure every day and make yourself at home every night. Let's get away. Let's make it count. Let's Jayco—and make memories that last a lifetime.

GENERATIONS OF FAMILY FUN



TOY HAULERS

LOAD UP ON FUN

Jayco's 2016 Toy Haulers are whatever you want them to be. On a whim, the industry's best garage becomes an extra bedroom, a rocking living space or the ultimate bunkhouse. These luxury crossovers pack a serious punch—with impressive amenities, spacious floorplans and construction made to withstand even the roughest off-road conditions. It's the perfect excuse to play—just be prepared to share.



Three-time DSI Quality Circle Award winner

Dealers have awarded Jayco Toy Haulers the DSI Quality Circle Award three times in recent years—a testament to continuous product excellence and improvement. The award, based on a survey of hundreds of RV dealers in the U.S. and Canada, takes into account product quality, value, service/support and more.



Octane Super Light: Page 4



Octane: Page 4



Seismic Wave: Page 8



Seismic: Page 10

SHARE YOUR PHOTOS AND STORIES ON SOCIAL MEDIA WITH [#LETSJAYCO](https://www.instagram.com/letsjayco).





222 BACK TO FRONT INTERIOR



T32C BACK TO FRONT INTERIOR



222 KITCHEN



222 BATHROOM

OCTANE SUPER LITE AND OCTANE

Introducing the industry's most feature-packed toy haulers, with supercharged amenities that come standard. It's fun in the form of eight versatile floorplans!



T32C BATHROOM



T32C BEDROOM

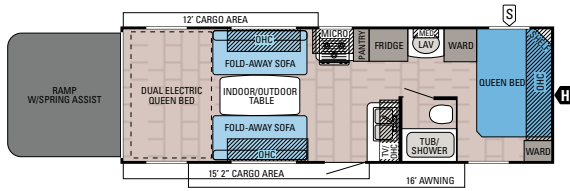


T32C KITCHEN



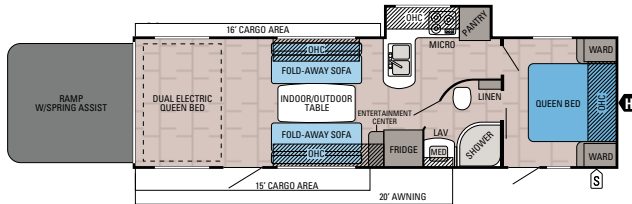
T32C FRONT TO BACK INTERIOR

OCTANE FLOORPLANS



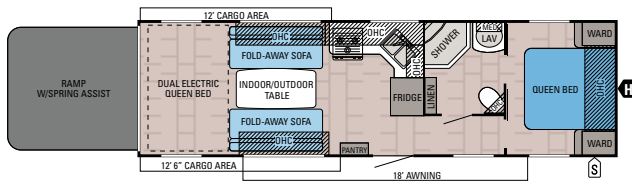
OCTANE | T26Y OPTIONS: A, B

Ext. Length: 30' 10" Ext. Height: 147" Unloaded Wt. (lbs.): 6,845 Sleeps: 7-8



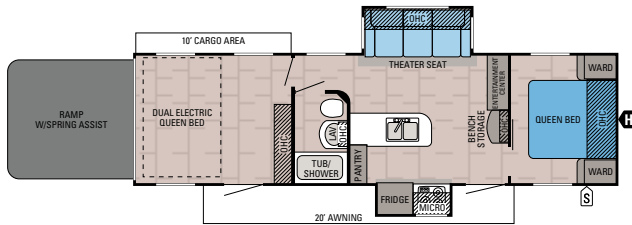
OCTANE | T30F OPTIONS: A, B

Ext. Length: TBD Ext. Height: TBD Unloaded Wt. (lbs.): TBD Sleeps: 7-8



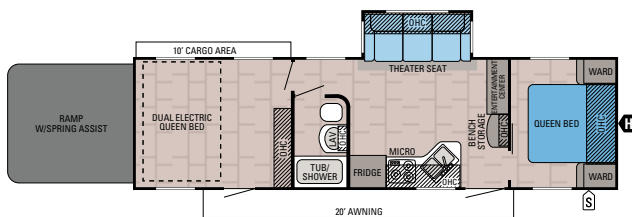
OCTANE | T31B OPTIONS: A, B

Ext. Length: 33' 8" Ext. Height: 148" Unloaded Wt. (lbs.): 7,205 Sleeps: 7-8



OCTANE | T32C

Ext. Length: 35' 1" Ext. Height: 150" Unloaded Wt. (lbs.): 8,860 Sleeps: 6



OCTANE | T32E

Ext. Length: 35' 1" Ext. Height: 151" Unloaded Wt. (lbs.): 8,485 Sleeps: 6

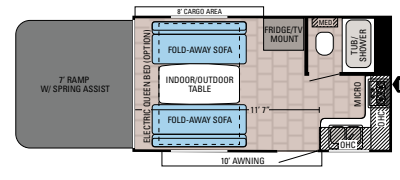
Unloaded Vehicle Weight (UUVW): Sometimes referred to as "Dry Weight," UUVW means the typical weight of this trailer as built at the factory. The UUVW, as used in product literature and other promotional materials, does not include cargo, fresh water, propane, options or dealer-installed accessories.

Gross Vehicle Weight Rating (GVWR): GVWR means the maximum permissible weight of the trailer, including the UUVW plus passengers, personal items, all cargo, fluids, options, and dealer-installed accessories. The GVWR is equal to or greater than the sum of the UUVW and the CCC.

Cargo Carrying Capacity (CCC): CCC means the maximum weight of all passengers, personal items, food, fresh water, propane, tools, other cargo and dealer-installed accessories that can be carried by the trailer. CCC is equal to or less than GVWR minus UUVW. The addition of options will decrease the CCC.

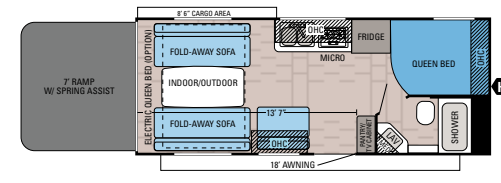
Hitch Weight (HW): The hitch weight, as used in product literature and other promotional materials, does not include cargo, fresh water, propane gas, options or dealer-installed accessories. The addition of these types of items will either add to or subtract from the stated hitch weight.

OCTANE SUPER LITE FLOORPLANS



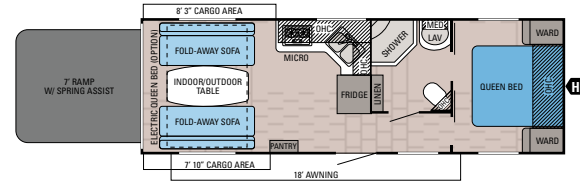
OCTANE SUPER LITE | 161 OPTIONS: A, B

Ext. Length: 20' 8" Ext. Height: 135" Unloaded Wt. (lbs.): 4,245 Sleeps: 1-4



OCTANE SUPER LITE | 222 OPTIONS: A, B

Ext. Length: 26' 5" Ext. Height: 134" Unloaded Wt. (lbs.): 5,015 Sleeps: 3-6

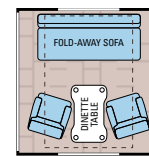


OCTANE SUPER LITE | 273 OPTIONS: A, B

Ext. Length: 31' 0" Ext. Height: 143" Unloaded Wt. (lbs.): 6,170 Sleeps: 3-6

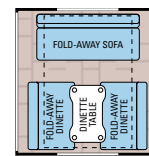
OPTIONS:

OPTION A



CHAIRS I/O DOORSIDE SOFA OPTION

OPTION B



FOLD-AWAY DINETTE I/O DOORSIDE SOFA OPTION

It is important for your safety and enjoyment that your tow vehicle be adequately sized and equipped to tow and handle the GVWR of the RV you select. Review weights and rating of your tow vehicle and consult a competent advisor for questions or advice. Whether you are new to RVing or a veteran, get a feel for the performance of your tow vehicle before heading out on the roadways. When you tow an RV, you must drive differently than when you drive a single vehicle. Practice hooking up, driving, backing up and braking in a safe environment or seek out professional instruction. Jayco affixes a weight label to each RV which lists weight information for that vehicle. See specifications chart on the next page.

OCTANE & OCTANE SUPER LITE STANDARDS AND OPTIONS

Octane Super Lite
Octane

Octane Super Lite
Octane

Exterior Equipment	Octane Super Lite	Octane
.024 mesa crimp exterior aluminum	•	
Laminated fiberglass sidewalls		•
Colored fiberglass, radius-profile front wall	•	•
Unitized 2-inch laminated floor construction with tubular aluminum frame	•	•
102-inch wide-body construction	•	•
I-class cambered structural steel I-beams with integrated A-frame	•	•
MOR/ryde® CRE3000™ rubber axle equalizer	•	•
Magnum Truss™ Roof System	•	•
Triple-tread entrance step		•
Lockable baggage doors, insulated and radius-cornered	•	•
G20 dark-tinted, safety-glass windows	•	•
Marine-grade exterior speakers (2)	•	•
Nitrogen-filled radial tires	•	•
Aluminum rims	•	•
Super Lube™ axles	•	•
Self-adjust brakes	•	•
Spare tire and carrier	•	•
Stabilizer jacks (4)	•	•
RVQ grill hookup (n/a on 161 Octane SL)	•	•
Diamond-plated panel on front	•	•
30-amp power service	•	•
Cable and satellite TV prep	•	•
Double propane bottles with regulator	•	•
Generator prep with 19-gallon fuel tank		•
Portable, self-contained 3,500-watt generator	•	
4,000-watt generator with auto-changeover switch		•
Double battery tray on A-frame	•	•
Systems monitor panel	•	•
Outside shower	•	•
Black tank flush	•	•
18-gallon-per-hour quick-recover gas/electric DSI water heater	•	•
Water heater bypass system	•	•
Water system winterization kit	•	•
LED taillights	•	•
Solar prep	•	•
Backup camera prep	•	•
Patio awning with adjustable pitch	•	•
Electric patio awning with adjustable pitch and LED lights	•	•
Transition ramp		•
3,500-pound electric tongue jack	•	•
Fuel station with 24-gallon tank	•	•
Heated and enclosed underbelly	•	•
Exclusive designer exterior graphics package	•	•
Matching Aztek Grey radius, fiberglass front wrap and ramp door	•	•
2-inch block foam, vacuum-bonded, aluminum-core sidewalls	•	•
102-gallon fresh water capacity (includes 6-gallon water heater tank)	•	•

Interior Equipment	Octane Super Lite	Octane
Bourbon Chocolate wood cabinetry	•	•
Ball-bearing drawer guides, 75-pound capacity with full-drawer extension	•	•
Stainless steel appliances	•	•
2-burner range	•	
3-burner range		•
Deep double-bowl sink with cutting board cover (1)	•	•
6-cubic-foot refrigerator	•	•
8-cubic-foot, double-door refrigerator		•
Convection microwave	•	•
Auto-ignition furnace with wall thermostat	•	•
13,500-BTU A/C with wall thermostat	•	•
Indoor/outdoor dinette table	•	•
Command center (select models)	•	•
USB charging port	•	•
Crank-up digital TV antenna with signal booster	•	•
32-inch LED HDTV		•
AM/FM/CD/DVD stereo system with speakers	•	•
Vinyl flooring throughout	•	•
Pleated night shades	•	•
ABS tub/shower surround	•	•
Glass shower door (select models)	•	•
Skylight in tub/shower		•
Marine toilet with foot flush	•	•
Bathroom power vent	•	•
A/C ducts in front bedroom (select models)	•	•
Under-bed storage with gas struts (select models)	•	•
Fold-away sleeper/sofas (2, select models)	•	•
Jayco-exclusive residential, quilted-top Denver Mattress®	•	•

Ramp and Cargo Equipment	Octane Super Lite	Octane
Radius-cornered ramp door, 2,500-pound capacity, 96-inch-wide ramp door opening	•	•
High-intensity rear ramp lights (2)	•	•
Bar-lock latches and keyed ramp door locks	•	•
Interior beaver-tail transition ramp (select models)	•	•
Spring-assist ramp door with non-skid flooring	•	•
2,500-pound-rated, flush, floor-mounted tie-down rings, anchored to steel frame	•	•
ToyLok® retractable security cable		•
Welded steel storage compartment in floor (select SL models)	•	•
Garage vent ports	•	•
Overhead storage cabinets	•	•
Dual retractable electric queen bunk beds		•
Retractable screen wall	•	•
Removable carpet in cargo area	•	•
Power bed in cargo bay	•	•
Party Deck with folding rails		•
Fold-away dinette in lieu of door-side sofa (select models)	•	•
Free-standing table with 2 chairs in lieu of door-side sofa	•	•
Front-and-rear flip sofas in lieu of bottom rear electric queen bunk bed (n/a with Party Deck option)		•
Center-facing flip sofas in lieu of bottom rear electric queen bed		•

Optional Customer Value Package

OCTANE AND OCTANE SUPER LITE SPECIFICATIONS

MODELS		DIMENSIONS				WEIGHTS (LBS.)				TANKS (GALS.)		
MODEL	FLOORPLAN	EXTERIOR LENGTH	EXTERIOR WIDTH	EXTERIOR HEIGHT (WITH A/C)	INTERIOR HEIGHT	UNLOADED VEHICLE WEIGHT	DRY HITCH WEIGHT	GROSS VEHICLE WEIGHT RATING	CARGO CARRYING CAPACITY	FRESH WATER CAPACITY (INCLUDES WATER HEATER)	GREY WASTE WATER CAPACITY	BLACK WASTE WATER CAPACITY
OCTANE	T26Y	30' 10"	102"	147"	94"	6,845	955	10,900	4,055	102	45.4	45.4
	T30F	TBD	102"	TBD	94"	TBD	TBD	TBD	TBD	102	45.4	45.4
	T31B	33' 8"	102"	148"	94"	7,205	1,070	11,950	4,745	102	45.4	45.4
	T32C	35' 1"	102"	150"	94"	8,860	1,435	12,250	3,390	102	45.4	45.4
	T32E	35' 1"	102"	151"	94"	8,485	1,390	12,250	3,765	102	45.4	45.4
OCTANE SUPER LITE	161	20' 8"	102"	135"	89"	4,245	580	7,000	2,755	59.2	28	45.4
	222	26' 5"	102"	134"	89"	5,015	815	8,000	2,985	59.2	45.4	45.4
	273	31' 0"	102"	143"	89"	6,170	965	9,950	3,780	59.2	45.4	45.4



355W BACK TO FRONT INTERIOR



355W BATHROOM

SEISMIC WAVE

Adventure meets value in this impressive cross-over—that's as versatile as it is luxurious.

 A 3D illustration of the Seismic Wave RV, a white and black cross-over model, shown from a side-rear perspective. It has a large front porch and a slide-out section.


355W BEDROOM



355W FRONT TO BACK INTERIOR



355W BACK TO FRONT GARAGE



355W FRONT TO BACK GARAGE



412W FRONT TO BACK INTERIOR



412W BACK TO FRONT INTERIOR



412W BATHROOM



412W BEDROOM



4112 FRONT TO BACK INTERIOR



4112 BACK TO FRONT INTERIOR



4112 BACK TO FRONT GARAGE



4112 FRONT TO BACK GARAGE



4212 FRONT TO BACK INTERIOR



4212 BATHROOM

SEISMIC

Get the spirit of a toy hauler in the body of a luxury fifth wheel—with the most bells, whistles and industry-firsts on the planet.



4212 BEDROOM TV UP

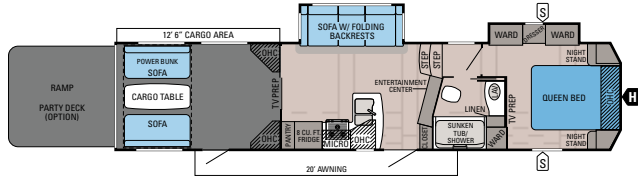


4212 BEDROOM TV DOWN



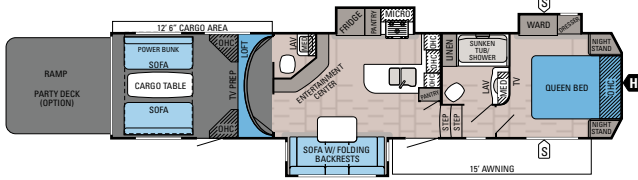
4212 BACK TO FRONT INTERIOR

SEISMIC WAVE FLOORPLANS



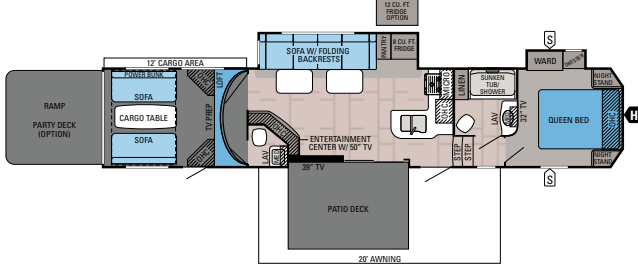
SEISMIC WAVE | 310W

Ext. Lgth: 38' 11" Ext. Ht: 159" Unloaded Wt. (lbs.): 12,165 Sleeps: 6



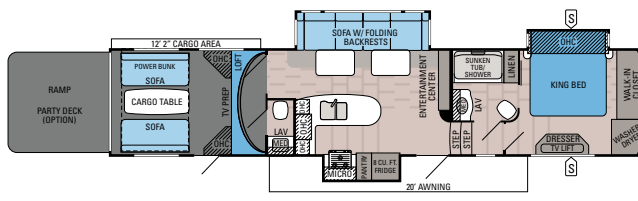
SEISMIC WAVE | 355W

Ext. Lgth: 40' 0" Ext. Ht: 159" Unloaded Wt. (lbs.): 12,845 Sleeps: 6



SEISMIC WAVE | 400W

Ext. Lgth: 43' 3" Ext. Ht: 159" Unloaded Wt. (lbs.): 14,120 Sleeps: 6



SEISMIC WAVE | 412W

Ext. Lgth: 42' 9" Ext. Ht: 160" Unloaded Wt. (lbs.): 13,530 Sleeps: 6

SEISMIC WAVE EXTERIOR GRAPHICS



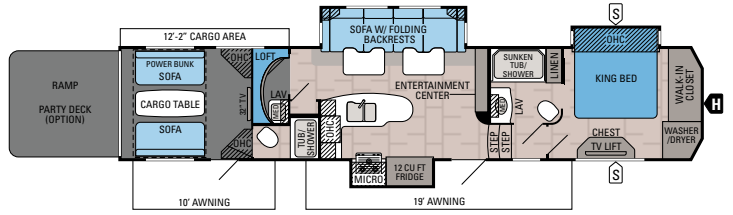
STANDARD GRAPHICS PACKAGE

SEISMIC WAVE AND SEISMIC SPECIFICATIONS

MODELS		DIMENSIONS					WEIGHTS (LBS.)				TANKS (GALS.)			
MODEL	FLOORPLAN	TOTAL EXTERIOR LENGTH	EXTERIOR TRAVEL LENGTH*	EXTERIOR WIDTH	EXTERIOR HEIGHT (WITH A/C)	EXTERIOR HEIGHT (W/ OPTIONAL BEDROOM A/C)	INTERIOR HEIGHT (MAIN)	UNLOADED VEHICLE WEIGHT	DRY HITCH WEIGHT	GROSS VEHICLE WEIGHT RATING	CARGO CARRYING CAPACITY	FRESH WATER CAPACITY (INCLUDES WATER HEATER)	GREY WASTE WATER CAPACITY	BLACK WASTE WATER CAPACITY
SEISMIC WAVE	310W	40' 9"	38' 11"	102"	159"	159"	103"	12,165	2,790	16,500	4,335	146	87	50
	355W	41' 9"	40' 0"	102"	159"	159"	103"	12,845	2,725	16,500	3,655	146	87	87
	400W	45' 1"	43' 3"	102"	159"	159"	103"	14,120	3,185	19,000	4,880	146	87	87
	412W	44' 6"	42' 9"	102"	160"	160"	103"	13,530	2,945	19,000	5,470	146	87	87
SEISMIC	4112	44' 7"	42' 11"	102"	159"	159"	103"	15,180	3,490	20,000	4,820	146	87	87
	4212	45' 2"	43' 5"	102"	159"	159"	103"	15,765	3,410	20,000	4,235	146	87	87
	4250	44' 11"	43' 2"	102"	158"	158"	103"	14,970	3,275	20,000	5,030	146	98	87

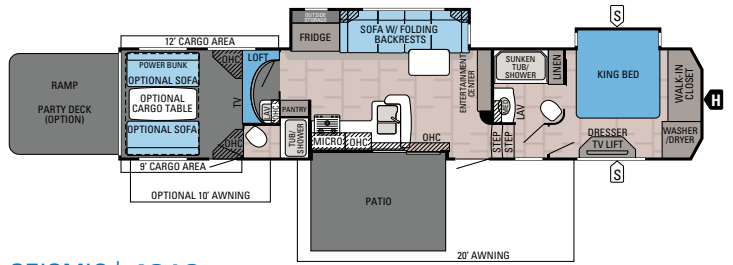
*Distance from the pin box to the bumper; total exterior length may be longer.

SEISMIC FLOORPLANS



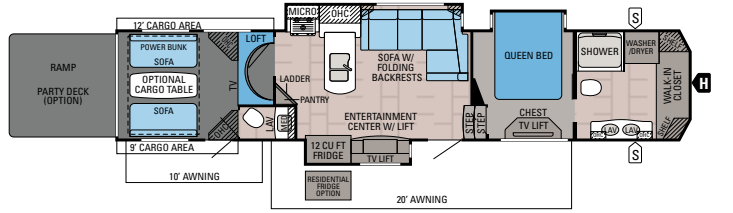
SEISMIC | 4112

Ext. Lgth: 42' 11" Ext. Ht: 159" Unloaded Wt. (lbs.): 15,180 Sleeps: 7



SEISMIC | 4212

Ext. Lgth: 43' 5" Ext. Ht: 159" Unloaded Wt. (lbs.): 15,765 Sleeps: 7



SEISMIC | 4250

Ext. Lgth: 43' 2" Ext. Ht: 158" Unloaded Wt. (lbs.): 14,970 Sleeps: 7-8

SEISMIC EXTERIOR GRAPHICS SELECTIONS



STANDARD GRAPHICS WITH WHITE SIDEWALLS

	Seismic Wave	Seismic
Exterior Equipment		
Gloss fiberglass sidewalls	•	•
Genuine gelcoat fiberglass sidewalls		•
Painted fiberglass front cap with Jayco logo		•
Premium full-body paint package		•
Integrated LED front cap docking light	•	•
3/8-inch roof decking on 5-inch crowned truss rafters (R-30)	•	•
5/8-inch tongue-and-groove plywood main floor decking	•	•
12-inch I-class cambered structural steel I-beams	•	•
Heat-reflective foil insulation in living area, bedroom, slideout floors and bathroom pass-through storage compartment	•	•
One-piece seamless roof membrane	•	•
Climate Shield™ insulation package	•	•
Magnum Truss Roof System	•	•
Folding roof ladder	•	•
6-point automatic leveling system	•	•
MOR/ryde CRE3000 rubber axle equalizer	•	•
MOR/ryde pin box	•	•
Correct Track alignment system	•	•
16-inch nitrogen-filled radial tires	•	•
16-inch spare tire with carrier	•	•
Aluminum rims	•	•
Super Lube axles	•	•
Self-adjust brakes	•	•
Heavy-duty, 7,000-pound axles	•	•
30-inch x 72-inch radius-cornered entrance door with step light	•	•
Electric patio awning with LED lights	•	•
Second 12V electric awning with LED lights	•	•
Security lights (2)	•	•
Stor-Galore™ basement storage	•	•
Metal Slam-latch™ lockable baggage doors, insulated and radius-cornered	•	•
Exterior TV hookup in basement area	•	•
Marine-grade exterior speakers (2)	•	•
Heated, enclosed outside utility center	•	•
5,500-watt generator with auto-changeover switch and 27-gallon fuel tank	•	•
Double 30-pound propane bottles	•	•
Battery compartment and disconnect switch (holds up to 6 batteries)	•	•
Generator prep with 27-gallon fuel tank	•	•
20-gallon-per-hour gas/electric auto-ignition water heater	•	•
24-gallon fuel station with command center gauge	•	•
146-gallon fresh water capacity (includes 10-gallon water heater tank)	•	•
Black holding tank sprayer and sewer hose compartment	•	•
Black holding tank sprayers for all bathrooms (includes half bath and second full baths)	•	•
Heated, insulated and enclosed holding tanks	•	•
Water system winterization kit	•	•
Outside shower	•	•
LED taillights	•	•
G20 tinted, automotive, frameless windows	•	•
Dual-pane, frameless, tinted, safety-glass windows	•	•
Aluminum-tread entry steps (triple on Seismic Wave; quad on Seismic)	•	•
Solar prep	•	•
Backup camera prep	•	•
Slideout awnings (2 or 3, select models)	•	•
50-amp service	•	•
Universal docking station	•	•

	Seismic Wave	Seismic
Interior Equipment		
Residential-style, pre-drilled and screwed, Amish-crafted cabinet construction with hidden hinges	•	•
Ball-bearing drawer guides, 75-pound capacity	•	•
Stainless steel, 3-burner range	•	•

	Seismic Wave	Seismic
30-inch residential-style, stainless steel microwave oven	•	•
Oversized 21-inch stainless steel oven	•	•
Residential, high-gloss solid-surface countertops	•	•
Under-mounted, stainless steel sink and sink covers (2)	•	•
23-cubic-foot residential refrigerator with ice, water and 1800-watt inverter	•	•
Stainless steel dishwasher (select models)	•	•
LED recessed lighting package	•	•
12-cubic-foot stainless steel refrigerator	•	•
Water heater bypass system	•	•
USB charging port in kitchen with 110V outlet	•	•
Residential sofa with built-in recliners; includes heat, massage, 110V outlets, USB ports, cup holders and folding backrests	•	•
Home theater system with HDTV (select models) (Seismic Wave: 39-inch or 50-inch; Seismic: 50-inch)	•	•
Premium sound system with DVD, sound bar and Bluetooth®	•	•
Auto-ignition furnace with digital thermostat (Seismic Wave: 35,000-BTU; Seismic: 40,000-BTU)	•	•
Sunken tub/shower with surround (select models)	•	•
Bath skylights	•	•
Bathroom power vent	•	•
Gas-strut, under-bed storage	•	•
Walk-in closet with sliding doors, 3 clothes rods and shoe storage (select models)	•	•
Pleated night shades (living room, bedroom)	•	•
MCD day/night roller shades in living room and bedroom	•	•
32-inch pop-up LED HDTV in bedroom (select models)	•	•
39-inch pop-up LED TV in bedroom (select models)	•	•
Bedroom wired and framed for second 15,000-BTU A/C	•	•
Whisper Quiet 15,000-BTU A/C in bedroom	•	•
Whisper Quiet 15,000-BTU A/C in living room	•	•
Washer/dryer prep	•	•
Fireplace (most models)	•	•
LinC® touchscreen remote system (controls all slideout rooms, landing gear, awnings and living room ceiling lights)	•	•
32-inch LED TV	•	•
Genuine stone and polished glass backsplash	•	•
Jayco-exclusive residential, pillow-top Denver Mattress	•	•

	Seismic Wave	Seismic
Ramp and Cargo Equipment		
Vacuum-bonded, laminated, 2-inch garage floor, fully insulated with block foam	•	•
Hinged spring-assist, radius-cornered ramp door, 2,500-pound capacity, 93 3/8-inch-wide opening with anti-slip, non-skid flooring	•	•
High-intensity, flush-mounted ramp lights (2)	•	•
Decorative chair rail and paneling	•	•
Tuff-ply, rubberized garage floor liner	•	•
Welded steel, beaver-tail storage in garage floor	•	•
2,500-pound-rated, flush floor-mounted tie-down rings, anchored to steel frame	•	•
Steel backers in floor for wheel chocks	•	•
24-inch x 72-inch garage door with step light	•	•
Black, pull-down, retractable screen wall	•	•
Vinyl snap-on window coverings	•	•
Power queen bed(s) with rear convertible sofa	•	•
Cargo bay wired and framed for 15,000-BTU non-ducted A/C	•	•
15,000-BTU non-ducted A/C in cargo area	•	•
Vent ports, tinted power roof vent, and closeable, directional A/C ducts	•	•
Entertainment system with DVD, CD and 2 garage speakers	•	•
Party Deck with folding rails, electric awning and remote control (manual awning on Seismic Wave)	•	•
Removable carpet in cargo area	•	•
Three-seasons garage wall with sliding doors	•	•

Optional
 Customer Value Package

SEISMIC EXTERIOR GRAPHICS SELECTIONS (CONTINUED)



STANDARD GRAPHICS WITH OPTIONAL AZTEK GREY SIDEWALLS



OPTIONAL PREMIUM PAINT PACKAGE

OCTANE / OCTANE SUPER LITE ADDED FEATURES



SOLAR PREP



BACKUP CAMERA PREP—2 LOCATIONS



CONVECTION MICROWAVE



2-INCH BLOCK FOAM, VACUUM-BONDED GARAGE FLOOR



STAINLESS STEEL APPLIANCES



PLEATED NIGHT SHADES



RESIDENTIAL COUNTERTOPS AND BACKSPLASH



PULL-DOWN SCREEN (STANDARD ON OCTANE, OPTIONAL ON OCTANE SUPER LITE)

SEISMIC / SEISMIC WAVE ADDED FEATURES



ALUMINUM QUAD (SEISMIC) OR TRIPLE (SEISMIC WAVE) ENTRY STEPS



ELECTRIC AWNING(S) WITH LED LIGHTS



OPTIONAL 23-CUBIC-FOOT RESIDENTIAL REFRIGERATOR WITH ICE/WATER AND 1,800-WATT INVERTER (SEISMIC ONLY)



15,000-BTU DUCTED WHISPER QUIET A/C (DUAL IN SEISMIC, SINGLE IN SEISMIC WAVE).



39-INCH (SEISMIC) OR 32-INCH (SEISMIC WAVE) PUSH-BUTTON, POP-UP TV IN BEDROOM (BED SLIDEOUT MODELS ONLY)



MCD DAY/NIGHT ROLLER SHADES (SEISMIC ONLY)



DARK-TINT, AUTOMOTIVE FRAMELESS WINDOWS



ROOM FOR UP TO 6 BATTERIES FOR EXTENDED DRY CAMPING



TECH FOIL HEATED AND FULLY INSULATED BATHROOM DECK



TOUCH-SCREEN, MULTI-FUNCTION REMOTE (SEISMIC ONLY)



OPTIONAL DISHWASHER (SELECT SEISMIC MODELS)



RESIDENTIAL SOFA WITH HEAT, MASSAGE, FOLDING BACKRESTS, CUP HOLDERS, USB, LED LIGHTS AND 110V OUTLETS



MOR/Ryde CRE3000 SUSPENSION



MOR/Ryde PIN BOX (STANDARD ON SEISMIC, OPTIONAL ON SEISMIC WAVE)

LET'S JAYCO—AND LEAVE OUR WORRIES BEHIND.

We know that your family fun rides on our commitment to quality. So we go the extra mile to make products that last—and stand behind them longer than anyone in the business.



THE JAYCO DIFFERENCE

When you go with Jayco, you get the strongest foundation in the business, unmatched weatherproofing and rock-solid construction.

1. **Vacuum-bonded walls and fiberglass exteriors** for better protection from the elements (n/a on Octane Super Lite)
2. **Magnum Truss Roof System** withstands 4,500 pounds—50 percent more than other roofs
3. **Welded aluminum frame** for a durable, lightweight structure (n/a on Octane Super Lite)
4. **2-inch, vacuum-bonded and insulated garage floors** aren't found on most competing toy haulers, and deliver added durability for your heavy toys
5. **D-rings rated for 2,500 pounds** are mounted through the vacuum-bonded floor and bolted to a steel plate attached to the frame; some manufacturers don't add this extra reinforcement

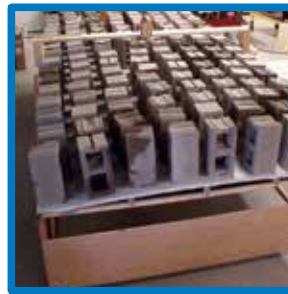
SEISMIC EXCLUSIVE

6. **Double layer of fiberglass insulation** behind the front cap, plus Flexfoil® and fiberglass insulation in the floors to provide extra warmth where it's needed most—in the bedroom, bathroom and living rooms

7. **Aerodynamic front cap** withstands the rigors of the road with infused paint and gel coating, plus ¼-inch plywood bracing for additional support—not typically found on competing fifth wheels



JAYCO'S ROOF VS OTHER ROOFS



4,500 POUNDS ON A JAYCO ROOF VS. OTHER ROOFS

THE MAGNUM TRUSS ROOF SYSTEM 50 percent stronger



CLIMATE SHIELD

LIVING ROOM	KITCHEN	BATHROOM	HOLDING TANK	BEDROOM
0°F 70°F	0°F 69°F	0°F 71°F	0°F 60°F	0°F 71°F
100°F 69°F	100°F 70°F	100°F 68°F	100°F 72°F	100°F 71°F

Extend your camping season with the Jayco Climate Shield.

It protects against extreme heat and extreme freezing—even in temperatures as high as 100 degrees or as low as zero degrees (Fahrenheit).*

*Unit was tested in zero degrees F and 100 degrees F weather over an extended period of time in a controlled environment and all functions of the coach were fully operational. Testing was done in a completely controlled environment; therefore, temperatures during testing may not represent actual temperatures in nature, and cannot account for elements such as wind or moisture. In actual use, unit may not perform as well. Supplier of cooling components does not guarantee anything better than 20 degrees difference from ambient temperature. In addition, outside components are subject to freezing and require steps to properly insulate. Jayco's warranty does not cover damage caused by freezing. To learn more about Climate Shield and testing done by Jayco, visit www.jayco.com.

WE START WITH ONE OF THE INDUSTRY'S **strongest** foundations

Many competitors modify or weld stock frames, which can weaken the integrity of your foundation. Jayco's custom-manufactured frames offer higher strength and durability.

Full-width outriggers: We build on full-width outriggers that are spaced 4-6 feet apart (vs. 8 feet) to better support the weight of the wall.

4-6 ft.

Octane travel trailer integrated A-frame: The A-frame runs through the main frame, preventing the hitch from buckling—a common issue in competing tack-welded frames.

Seismic fifth wheel frame: The frame over the truck bed is built on a superior 2-inch x 6-inch tube perimeter structure to better support the bedroom sidewalls. Competing fifth wheels have a smaller frame; these manufacturers add a sidewall support seam to compensate for expansion joints.

2" x 6"

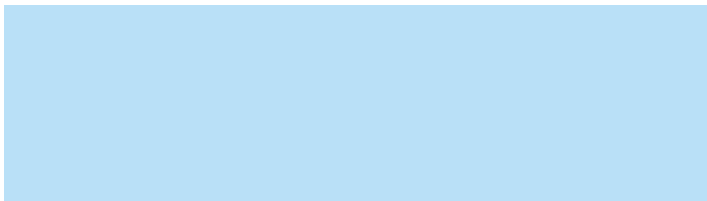
I-class cambered structural steel I-beams: Jayco uses a unique molded, one-piece design to prevent the unit from twisting; competing three-piece I-beams can warp over time at the welded seams.

Learn more at StrongFoundation.Jayco.com



Generations of family fun.

Meet your Jayco Dealer



We work hard—so you can play hard. From finding the perfect Jayco for your family to providing flexible financing options and full-service support, we're here to help.

2
YEAR
WARRANTY

FREE

ROADSIDE
ASSISTANCE

Travel with confidence, with our industry-leading, bumper-to-hitch limited warranty and a year's access to Coach-Net™—the country's largest RV emergency road service.

For a copy of our 2-year limited warranty with full terms and conditions, please contact your local Jayco dealer.

eco advantage™

Jayco's long-term commitment to generations of family fun

After four years of increased efforts to eliminate waste, conserve energy and increase recycling, we've come a long way in building RVs that are not only better for your family—but also better for the planet.

Learn more at Jayco.com/EcoAdvantage

Follow Jayco



Jayco, Inc., P.O. Box 460, Middlebury, IN 46540, www.jayco.com © RVIA See dealer for further information and prices. All information in this brochure is the latest available at the time of publication approval. Jayco reserves the right to make changes and to discontinue models without notice or obligation. Photos in this brochure may show optional equipment and props for photography purposes. RVs built for sale in Canada may differ to conform to Canadian codes. ©2015 Jayco, Inc. 0915-75K Printed in U.S.A.